



JAPAN 2023

VOYAGES & LAND JOURNEYS



sceniceclipse.com

Miyajima Island, Japan
N 34° 27' E 132° 30'



Welcome to the extraordinary

We invite you to experience Japan on board Scenic Eclipse, The World's First Discovery Yachts™. These voyages will immerse you in the unique Japanese culture, fascinating history and world-renowned cuisine and have been designed with you in mind, to delight both the keen explorer and the sophisticated traveller.

Your experience will be one where 6-star ultra-luxury meets discovery. Take time to relax in your spacious suite whilst enjoying the finest amenities and butler service, delight in a culinary journey at up to 10 world-class dining experiences and rejuvenate at the luxurious 550m² Senses Spa.

You'll be introduced to the unseen riches of Japan, reaching places only a Discovery Yacht can get to. From Western-style architecture marking bygone days in Hakodate, to the incredible archaeological dig of Sannai Maruyama and a touching visit to the Peace Memorial Park of Hiroshima, enjoy exclusive Scenic Enrich and Scenic Freechoice activities. Designed to immerse you in your destination, these all-inclusive experiences allow you to personalise your journey to suit your pace and interests.

Learn about ancient samurai traditions, wander through cutting-edge metropolises, and marvel at vast swathes of untouched natural scenery and UNESCO World Heritage sites. You'll enjoy enlightening moments that will enrich your perception of the Land of the Rising Sun while creating memories you will cherish forever.

We look forward to welcoming you on board Scenic Eclipse to discover Japan beyond your imagination.



James Griffiths
Vice President,
Marine Operations



Erwan Le Rouzic
Captain



Tom Götter
Director of Food and
Beverage – Ocean



Contents

The World's First Discovery Yachts	6
Truly All-Inclusive Ultra-Luxury	8
Scenic Freechoice	10
Scenic Enrich	13
Travel Tailored for You	14
2023 Earlybird offers	16
Japan	18
The Aleutian Islands	34
Japan Land Journeys	38
Truly All-Inclusive Dining	42
A Feast for Your Senses	44
Ultra-Luxury Suites	46
Indulgent Spaces	48
Terms & Conditions	50
Scenic Eclipse Deck Plan	54



SCENIC°ECLIPSE

WHERE ULTRA-LUXURY MEETS DISCOVERY

Observation Deck

Spacious Observation Terrace overlooking the front of the yacht with sweeping views.

State of the Art Technology

A strengthened hull, forward bow thrusters and an electronic Azipod propulsion system enable safe navigation.

Observation Lounge

Provides optimal viewing with Swarovski telescopes and a place to relax.

Up to 10 Dining Experiences

A culinary journey awaits, with up to 10 dining experiences from casual to fine dining, including 24-hour in-suite dining.

GPS Dynamic Positioning System

This maintains the ship location, without dropping anchor onto sensitive seabeds.

Senses Spa

The exclusive Senses Spa boasts 550m² of pure indulgence and tranquility, featuring an extensive menu of luxury treatments*.



Oversized Stabilisers

Custom-built stabilisers are 50% larger than other ships, providing greater stability for navigating waters and disembarking for shore excursions.

Nine Lounges & Bars

With an impressive array of indoor and outdoor spaces, no more than 228 guests and only 200 in polar regions, there is plenty of room to relax.

Theatre

The state-of-the-art theatre hosts lectures and education programs.

Polar Class

Polar Class 6 - designed and built to the latest uncompromising standards for ships operating in polar waters, for complete comfort and peace of mind.

Scenic Eclipse has set the benchmark in ultra-luxury cruising, custom designed with a wealth of world-class facilities for unrivalled exploration. As part of our commitment to ensuring the destinations we visit retain their wonder, we've invested in state-of-the-art technology and environmentally sustainable systems, to leave as small a footprint as possible.



Our Commitment to your Health & Safety

The Scenic Health & Safety Steering Committee is working closely with Cruise Lines International Association (CLIA), local and international Government Health agencies, to ensure our protocols go above and beyond the latest regulatory requirements.

The most recent insights and world-class technologies have been implemented on board Scenic Eclipse. Amongst our extensive range of health and safety measures, Scenic Eclipse is equipped with an advanced Heating, Ventilation and

Air-Conditioning system (HVAC) throughout the ship and in guest suites which provide 100% fresh air through both a UVC and HEPA filter treatment. We are committed to continuously updating our protocols to safeguard the health and safety of our valued guests and crew, ensuring you can travel with complete confidence.

For further information on these policies, please visit [scenic.co.uk/assurance-oceans](https://www.scenic.co.uk/assurance-oceans)



Scenic Eclipse

The World's First Discovery Yachts™



Discovery Yacht Cruising

Scenic Eclipse caters for up to 228 guests with an impressive array of luxurious spaces and activities for an intimate cruising experience. Relax in the outdoor Vitality Pools, go kayaking and stand-up paddleboarding from the marina deck and explore stunning coastlines by Zodiac. Enjoy up to 10 world-class dining experiences, nine bars and lounges and a dedicated Observation Lounge and Terrace.



World-Class Design

Scenic Eclipse is designed with an unwavering commitment to safety and excellence. The custom-built yachts feature world-class technology including customised stabilisers (50% larger than other ships), a strengthened hull, forward bow thrusters and an electronic Azipod propulsion system, enabling safe and comfortable navigation.



6-Star Ultra-Luxury

Watch the world go by from your private Verandah Suite in 6-star luxury. A dedicated butler service is available to every guest, along with an almost 1:1 staff-to-guest ratio. The Comfort Class 1 notation, featuring the highest sound insulation and vibration as per the marine class society Bureau Veritas, spans throughout all public spaces and suites.



Scenic Freechoice & Enrich

Enjoy the wonders of Japan through exciting truly all-inclusive discovery excursions, handcrafted to showcase the very best of your destination and create memories that will stay with you forever. Go behind the scenes with Scenic Enrich to enjoy private access and immersive experiences in iconic locations or choose from a wide range of Scenic Freechoice activities, meticulously curated to cater to your fitness level and interest.



Unrivalled Viewing

Scenic Eclipse has an abundance of space, spanning across 10 luxurious decks, from outdoor areas, to the Sun Terrace on the top deck offering sweeping views, to the spacious Observation Terrace overlooking the front of the yacht. Senses Spa and Pool Terrace provide relaxing vantage points to spot incredible landmarks and wildlife ensuring you never miss a moment.



State-Of-The-Art Technology

Your safety is our highest priority. Scenic Eclipse's world-class technology includes Safe Return to Port, with multiple redundant operating systems to ensure reliability. The GPS Dynamic Positioning allows us to maintain our location without dropping anchor onto sensitive seabeds. We have also installed an Advance Wastewater Treatment system and highly effective engines to reduce emissions, noise and vibrations.



Scenic Eclipse Truly All-Inclusive Luxury

Enjoy the experience of a lifetime, as we reveal the many wonders of Japan from the elegant surrounds of your ultra-luxury Discovery Yacht, Scenic Eclipse.



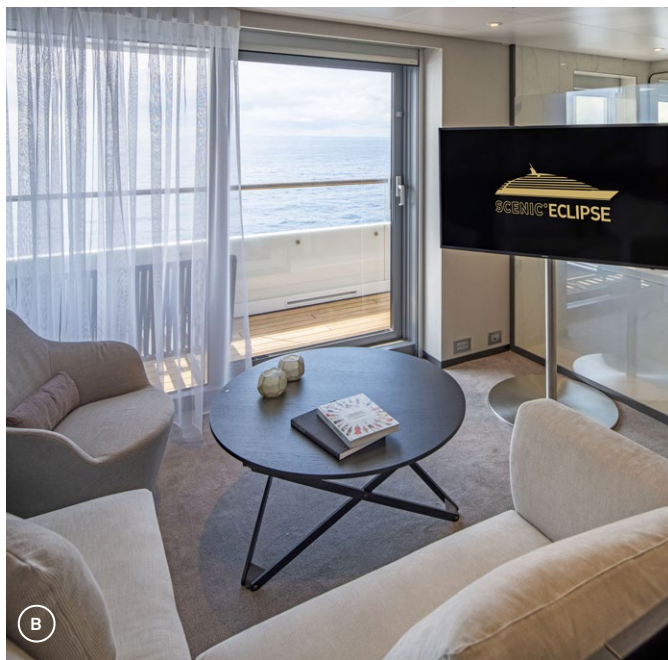
When you travel on board Scenic Eclipse you can be confident that every detail is taken care of and our highly trained staff, will anticipate your every need.

Each aspect of your comfort and peace of mind has been considered. This includes your airport transfers, all tipping and gratuities both on board and onshore, making your cruise a truly carefree experience. Your expert local guides will ensure every port of call surprises and delights.

Truly All-Inclusive Services & Amenities

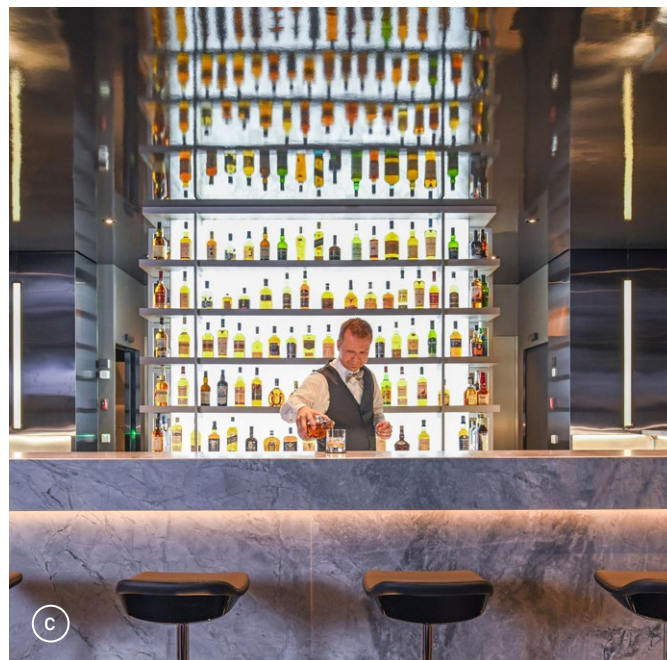
- Up to 228 guests on board for a truly exclusive experience
- Spacious all-verandah luxury suite accommodation
- Butler service for every guest and an almost 1:1 staff-to-guest ratio
- Up to 10 dining experiences, from casual to fine dining
- The finest selection of included premium branded beverages, with a choice of over 100 whiskeys*
- Engaging lecture and education program with on board experts
- Dedicated Observation Lounge & Terrace for optimal viewing opportunities
- On board Swarovski Telescopes and in suite binoculars so you never miss a moment
- Indulgent 550m² Senses Spa[#], gym, yoga and Pilates studio
- Scandinavian inspired outdoor vitality pools
- State-of-the-art theatre for entertainment and education program
- Complimentary Wi-Fi[^]
- Internal flights and taxes
- Return airport transfers, all tipping on board and onshore

A Scenic Eclipse Butler
B Spa Suite Lounge
C Scenic Whiskey Bar
D Senses Spa[#]
E Koko's Sushi Bar



Luxury Suites with Butler Service

Watch the world go by from your indulgent ultra-luxury private verandah or terrace, in one of the 114 spacious and elegantly appointed suites, as your butler pours you a glass of champagne.



Premium Beverages

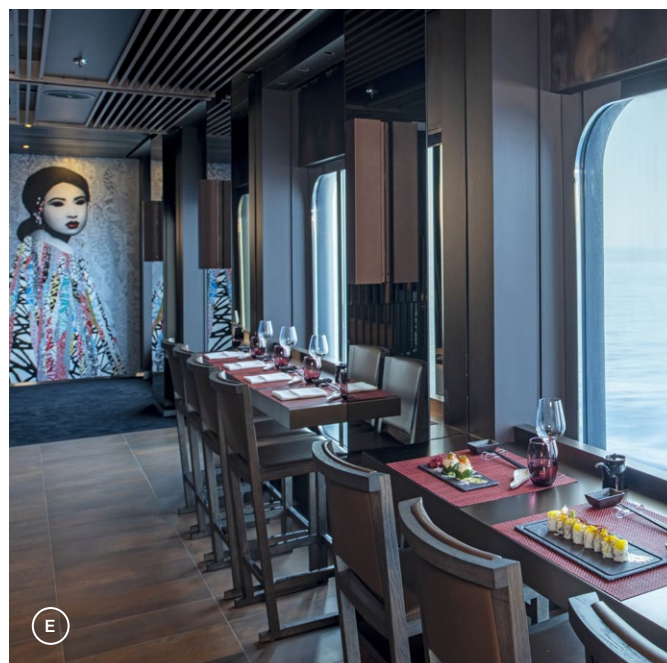
Unlimited beverages are included any time of the day. Choose from more than 100 whiskeys from around the world, top-shelf spirits and an excellent selection of fine wines curated by Master of Wine, Keith Isaac*. Enjoy custom-made cocktails or mocktails, a complimentary mini-bar restocked daily and an extensive range of specialty teas and coffee.



Indulgent Spaces

From the 550m² Senses Spa# to the gym, yoga and Pilates studio, nine spacious bars and lounges, outdoor terraces and multiple pool areas, there is space on board to meet every need, for the ultimate Discovery Yacht experience.

*All drinks on board are included except for a very small number of rare, fine and vintage wines, champagnes and spirits. ^Limited in remote regions. #Spa treatments at an additional cost.



Dining

Enjoy up to 10 truly all-inclusive dining experiences ranging from relaxed café style dining at The Yacht Club to Sushi @ Koko's, an authentic Japanese dining experience, with new menus every day that draw from over 2,500 recipes to take you on a culinary journey.



Scenic Freechoice



Whether you are interested in exploring temples and gardens, discovering a city's hidden gems, learning about the region's history or indulging in the local cuisine, our comprehensive range of Scenic Freechoice activities offer something for everyone.

From visits to shrines and centuries-old temples, exploring local markets or unveiling ancient traditions and cultural wonders, Scenic Freechoice activities give you the flexibility to plan your days around what suits your interests.



Aomori

Aomori City Walking Tour

Experience the charm of the Aomori on a walking tour, visiting the Nebuta Museum Wa Rasse and the local fish market where you can experience local Aomori life.

Arts & Crafts of Aomori

Learn about the traditional 'Kogin-sashi' embroidery which is unique to the area and Tsugaru Ujoyaki, a pottery kiln established by potter Rikei Imai who will explain his style of work.

Castle City of Hirosaki

Visit Hirosaki Castle Park, one of only 11 castles in all of Japan to maintain the original main donjon structure, and learn about the Neputa Festival at the nearby Tsugaru-han Neputa Village.

Cultures of Aomori

Walk around the Sannai Maruyama Archaeological Site one of the most complete and best preserved Jomon Period villages in Japan.

Hachinohe

Culinary Tradition & Sake of Hachinohe

Delight in the local food of Hachinohe. Discover the long history of Hachinohe Shuzo, a prestigious sake brewery.

Natural Beauty of Oirase & Lake Towada

Float down one of the most beautiful river valleys in the country, Oirase Gorge, marked by rock formations and plunging waterfalls along the way. Enjoy a leisurely cruise on Lake Towada and visit the atmospheric Towada Shrine.

Life & Culture of Fishermen

Enjoy a brewery tour and sake tasting at Hachinohe Shuzo Sake Brewery, founded in 1775. Be welcomed by local fishermen and enjoy local delicacies with sake for lunch, while the men depict their life at sea.

Natural Sceneries of Hachinohe

Hike the Michinoku Shiokaze Trail, past wildflowers and 100-year-old pine trees. Visit Ashigezaki Observatory and Kabushima Shrine, home to incredible numbers of wild Umineko Black-tailed gulls.

Highlights of Hachinohe

Explore the landmarks of Hachinohe, visiting Kabushima Shrine, Ashigezaki Observatory, Sanriku Fukko National Park, Kushihihi Hachiman Shrine, one of the most prestigious shrines in the area and Hasshoku Food Centre.



Hagi

Hagi Castle Town Walking Tour

Pass through the historic streets of Hagi, marvelling at the architecture which dates to the days of the samurai.

Five Storied Pagoda & Sesshu Garden

Head deep into the heart of Yamaguchi prefecture and explore the Zen style Sesshu Garden of the Joeiji Temple and Rurikoji Temple, one of Japan's most beautiful and a national treasure.

Explore the Akiyoshi-do Cave

Marvel at the natural limestone sculptures of Akiyoshidai Quasi-National Park, taking in the beautiful views of the karst plateau. Explore Akiyoshi-do Cave, one of the largest limestone caves in Japan.

Castle Town Walking & Kikuya-ke House

Delight in the works of Hagi ceramic artist Yoshika Taibi, led by his son who will guide you through the museum, before strolling through the samurai district and enjoying an exclusive tea ceremony.

Ukiyoe Museum & Samurai Quarter

Visit a local gallery displaying unique Ukiyo-e era Japanese woodblock prints and contemporary art, before exploring the traditional style Japanese houses and old-fashioned streets of the Samurai Quarter.



Hakodate

Hike Mt. Esan

Mt. Esan is an active volcano rising 618 metres above sea level. Hike up to the summit with your local guide where you will be rewarded with panoramic views and spectacular sulphur-emitting steam vents.

Highlights of Hakodate

Explore the famous Hakodate Morning Market and view the historic Fort Goryokaku Park before travelling by ropeway to the summit of Mt. Hakodate.

Onuma Quasi-National Park

Quasi-National Park features a landscape formed by the ancient volcanic eruptions of Mt. Komagadake. Walk along a natural hiking path that allows you to navigate from island to island by crossing bridges.

Goryokaku & Bay Area

Fort Goryokaku is a star shaped Western style citadel. Obtain an aerial view from Goryokaku Tower before visiting the bay area, an atmospheric shopping, dining, and entertainment complex.

Evening visit to Mt. Hakodate

Travel by ropeway to the summit of Mt. Hakodate for sweeping views of the city at night (301A only).

Morning Market & Goryokaku

Visit the Hakodate Morning Market with a local expert and delve into the many products on sale including various types of fresh seafood as well as fresh produce (101A only).

Saijo Sake Street & Peace Memorial Park

Enjoy a walking tour through the historic district from brewery to brewery to delight in samples of sake in Saijo, before visiting the Peace Memorial Park.

Hiroshima

Explore Hiroshima City

Step back in time and discover Hiroshima's rich history, visiting the Peace Memorial and Museum and the Atomic Bomb Dome, then on to the lovely Japanese garden, Shukkeien.

Hiroshima On Foot & Tram Ride

Travelling by local tram, enjoy a walking tour of Hiroshima's most iconic sights including the Peace Memorial Park and Museum.

Sacred Island of Miyajima

Discover the UNESCO World Heritage, Itsukushima Shrine on Miyajima Island, and marvel at the 50-foot-tall red archway standing in the water, appearing to float on the sea.

Saijo Sake Street & Peace Memorial Park

Enjoy a walking tour through the historic district from brewery to brewery to delight in samples of sake in Saijo, before visiting the Peace Memorial Park.

Kagoshima

Highlights of Kagoshima

Travel by ferry to Sakurajima Island to view the lunar-like landscape and spectacular lava fields created by past eruptions. Visit Senganen, a serene Japanese-style landscape garden before the world heritage site Ruins of Reverberatory Furnace.

Chiran Samurai Residence & Peace Museum

Visit the well-preserved residences and gardens of the Samurai and the Chiran Peace Memorial Museum, commemorating the bravery and sad sacrifice of young kamikaze pilots in WWII.

Ibusuki Sand Bath Experience

Discover one of Japan's most celebrated hot springs for a sand bath experience. Rejuvenate your mind, body, and soul as you bask in the luxuriously warm sand heated by geothermal geysers and springs. The sand bath is known for its promotion of health and circulation.

Shochu Brewery & Satsuma Yaki pottery

Visit the unique Kinzan-gura Shochu Brewery that uses the tunnel of a gold mine to store their Shochu. Enjoy a tasting followed by a visit to Satsuma-Yaki Pottery kiln to learn the history and process of creating this art form.

Makurazaki Dashi workshop

This culinary tour takes you to the Bonito Flakes Factory. A local Japanese ingredient, bonito flakes are dried, smoked bonito fish and look like wood shavings. Enjoy a workshop learning this old technique before tasting the soup.

Kirishima Green Tea Terrace

Travel up the Kirishima Mountain Range to a local tea farm where the farmers will walk you through brewing your own tea. Enjoy tasting your creation whilst learning of the local life.



Kanazawa

Shirakawago & Washi Making

Explore one of the most scenic World Heritage sites in Japan, Shirakawa-go village, before taking part in the art of Japanese paper making at Gokayama.

Castle Town of Kanazawa

Learn about the lifestyle and structures of Kanazawa's Castle town. Enter one of the samurai houses and view the Kenrokuen Garden from a traditional style of Japanese tearoom.

Best of Kanazawa

Visit the largest teahouse district, try a gold leaf experience using thin gold sheets produced in Kanazawa, visit Kenrokuen Garden, and learn about how to make Kutani ware.

Cooking Local Cuisine

Walk through Omicho Market, called 'Kitchen of Kanazawa', and purchase items for your cooking experience. Cook the local food 'Jibuni' simmered in dashi and soy sauce.

Higashi Chaya District & Tea Ceremony

At the Gyokusen-an teahouse watch a tea ceremony performance. Enjoy green tea and Japanese dry confectioneries called 'Higashi' whilst enjoying a pleasant view of a Japanese garden.

Kochi

History of Kochi

Discover the iconic landscapes of Kochi on this half-day tour visiting Kochi Castle, one of only 12 castles in Japan which retains the original main donjon, and Katsurahama, one of the most scenic spots in all of Kochi.

Chikurinji Temple and Makino Botanical Garden

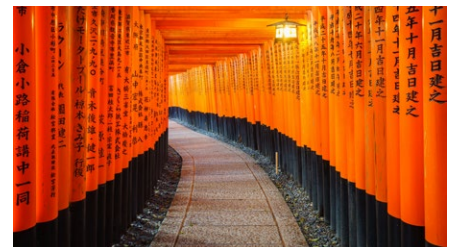
The Chikurinji Temple is a quaint Shingon temple located in Mt. Godai. Dating back to the 8th century, the temple is an important pilgrimage spot and one of the most famous temples in Kochi.

Niyodo River and Washi Paper Making Workshop

Enjoy the magnificent scenery of the Niyodo River on your way to the Washi Paper Making Workshop. In this workshop you will learn the traditional techniques of paper making using natural resources while learning of its history.

Ryugado Cave and Ekingura Museum

Visit Ryugado cave, a limestone cave that is known as one of the most beautiful caves in Japan. Continue to the Ekingura Museum and admire the art created to push boundaries.



Maizuru

History of Maizuru

Learn the naval history at Red Brick Park and Maizuru Repatriation Memorial Museum before seeing the stunning view from Goro Sky Tower.

Amanohashidate & Motoise Kono Shrine

Explore Amanohashidate, or 'Bridge of Heaven,' considered to be one of the most beautiful bays in the world. Continue on Motoise Kono Shrine, built using the oldest architectural style known in Japan.

Best of Kyoto

Spend the day taking in Kyoto's top highlights. Visit Nijo Castle, the torii gates of the Fushimi Inari Shrine, and the gilded Golden Pavilion.

Tenryuji Temple & Miyama

Visit of Tenryuji Temple in Arashiyama to see a famous Japanese Garden before exploring the Miyama Old Good Town with more than 200 thatched-roof (kayabuki) farmhouses dotting the picturesque countryside.

Washi Paper Making Experience & Sake Tasting with Sake Sommelier

Join a washi experience that delves into the heritage and beauty of this ancient paper-making tradition. At the legendary shrine Motoise Kono, enjoy a sake tasting and lecture on the history of Japanese sake with an authentic Japanese sake sommelier.

Matsuyama

Uchiko Walking Tour & Katsuben

Explore the charming town of Ichiko dating back to the Edo period, and visit Kamihaga-tei, a traditional Japanese house, Honhaga-tei garden and a wooden Japanese style theatre, Uchiko-za.

Highlights of Matsuyama

Discover the magnificent stone walls, gates and turrets of Matsuyama Castle, built on top of Mount Katsuyama. At Isite-ji temple, delight in the exquisite structures before strolling Dogo Onsen, one of the oldest and most famous hot springs in Japan.

Dogo Onsen Hot Spring & Ishiteji-Temple

Visit Dogo Onsen and Isite-ji Temple, a time-honoured Buddhist temple close to the hot spring.

Matsuyama Castle & Dogo Hot Spring

Enjoy a birds eye view of Matsuyama from Matsuyama Castle, before indulging in a bathing experience at Dogo Onsen.

Muroran

Lake Tōya and Mount Usu

Walk the trails around Lake Tōya seeing various ruins and two of the largest craters from the eruption of Mount Usu in 2000.

Noboribetsu Hotspring

Hokkaido's most famous hot spring resort, Noboribetsu offers eleven different kinds of thermal waters that are considered among Japan's best and most effective.

Upopoy National Ainu Museum

Upopoy National Ainu Museum and Park promotes the life and culture of Ainu people, an ethnic group indigenous to northern Japan.

Nagasaki

Panoramic Nagasaki

Get a spectacular panoramic view of the city from Mt. Inasa Observatory. Visit Nagasaki Peace Park, dedicated to world peace, and Dejima, a former island and trading post during the Edo period.

Atomic Bomb Museum & Peace Park

Experience two must see spots in Nagasaki, the Atomic Bomb Museum with over 900 artifacts showing the impacts of the plutonium bomb that was dropped in 1945, and Nagasaki Peace Park, commemorating the city's destruction. Choose to explore these highlights on coach or on a walking tour using the city tram.

Arita Porcelain Town

Explore the birthplace of magnificent Japanese porcelain, learning the history at the Kyushu Ceramic Museum while viewing pottery exhibits and demonstrations.

Hidden Christian Site Stroll in Sotome

Learn of the history of Christians in Nagasaki and their attempts to maintain their faith during the Christianity ban from 1614 until 1873. Stroll through the Sotome area and visit the Father de Rorz Memorial Hall and Former Shitsu Aid Center building.

Crafting the “Light of Peace” candle

On this special tour, you will make candles for the “Light of Peace” ceremony to deliver a prayer for peace from Nagasaki. The ceremony will be hosted in September where your candle will be lit on your behalf. You will then visit the Nagasaki Peace Park and offer flowers to those who died in the atomic bombing.

Sado Island

Sado Gold Mine

Visit Sado Gold Mine, learning how the people in the Edo era worked in this mine and how the ‘Koban’ was manufactured.

Japanese Drum Experience & Sake Brewery

Join a special taiko-drumming workshop and enjoy a performance before visiting the Hokusetsu Sake Brewery for a tasting.

Ogi Exploration by e-Bike

Enjoy an easy ride on an e-bike along the coastline of Sado with a local guide, making stops at highlight destinations including Yajima-iriguchi, Shukunegi Village, and the Ogi Folkloric Museum.

Shukunegi Village & Tarai-Bune Boat

The Tarai-bune is a traditional boat used to collect shellfish and seaweed around various fishing ports of the Ogi district. Visit Shukunegi Village and enjoy a ride.



Sakaiminato

Visit Mt Daisen

Enjoy a short hike on Mt Daisen, a spiritual icon and a centre of mountain worship, including a visit to the Daisenji Temple.

Adachi Museum of Art & Yushien Japanese Garden

Walk through the Adachi Museum of Art, combining a collection of modern Japanese art and one of the best gardens in Japan, before seeing the peony flowers at the Yushien Garden.

Matsue castle & Samurai District

Matsue Castle is one of only a dozen original castles in Japan. Tour the castle's main keep and grounds.

Grand Shrine of Izumo

Visit the Grand Shrine of Izumo, one of the most ancient and important Shinto shrines in Japan.

Yonago Mizutori Park

Yonago Waterbird Sanctuary is a great place to visit for those who have a strong interest in ornithology, as well as those who appreciate nature and wildlife. Learn about the varied ecosystems and spot some of the 200 varieties of birds.

Sendai

Matsushima Cruising

The best way to appreciate the incredible natural scenery of Matsushima Bay is from the water. Matsushima has long been celebrated as one of the Nihon Sankei (Three Views of Japan), with more than two hundred pine-covered islands dotting its picturesque bay.

Reconstruction of Ishinomaki

Ishinomaki is one of the areas that was most seriously affected by the 2011 Tohoku earthquake and tsunami. Learn about this area and witness the progress of the recovery efforts.

History of Sendai

Visit the Zuihoden Mausoleum that was rebuilt in 1979 and walk through the artifacts, before seeing the Sendai Castle Ruins and the Osaki Hachimangu shrine dedicated to Sendai Sochinju (local Shinto deity).

Hiraizumi: World Heritage Sites

Drive to the Chusonji Temple, Hiraizumi's most famous attraction, and explore the many buildings dotted throughout the forest including the Konjikido Hall (Golden Hall) that is covered inside and out in gold leaf. Visit the Motsuji Temple and its peaceful pure land garden known as 'Buddhist

Paradise'.

Shingu

A Taste of Kii-Katsuura

The Katsuura fishing port boasts the largest catches of raw tuna in Japan, using environmentally friendly longline fishing methods. Walk around the bustling fish market and enjoy tuna and other Katsuura dishes while watching a tuna carving demonstration.

Nachi Shrine Walking Tour

Explore the spiritual realm of Kumano and retrace the footsteps of the countless pilgrims who underwent the perilous journey to Kumano Sanzan. Hike Mount Nachi and visit the Kumano Nachi Shrine and Seigantoji temple, while enjoying the breathtaking views of Nachi Falls.

Shimizu

Kunozaan Toshogu Shrine & Mt.Fuji

Visit Nihondaira Park and enjoy panoramic views of verdant tea fields and towering Mt. Fuji. Board an aerial ropeway up the mountainside to the Kunozaan Toshogu Shrine, the burial place of the first shōgun of the Tokugawa shogunate.

Mt.Fuji, Shrine & Nature

Soak up the beauty of Shiraito Falls, fed by the volcano's spring water and ranked among the most beautiful in Japan. Visit Mt Fuji World Heritage Centre and Fujisan Hongu Sengen Taisha Shrine, erected in the 16th century to calm Mt. Fuji's eruptions.

Ukiyoe Museum & Miho-no-Matsubara

View more than 1,300 ukiyo-e exhibits at the Tokaido Hiroshige Art Museum then relax with a cup of tea at Miyuki-tei, a traditional teahouse. Then enjoy scenic views of Mount Fuji, the Izu Peninsula and across Suruga Bay at Miho-no-Matsubara.

Tokyo

Panoramic Tour in Tokyo

Explore the landmarks of Tokyo on a panoramic drive through the city. Visit the Imperial Palace located on the former site of Edo Castle, a large park area surrounded by moats and massive stone walls in the centre of Tokyo, and the residence of Japan's Imperial Family.

Explore the structure of Tokyo Sky Tree

Discover the structure of Tokyo Sky Tree, the tallest structure in Japan. Learn how the tower was built before enjoying panoramic views of Tokyo from the observation deck.

Tokyo Highlights

Learn about Japanese royalty at the Imperial Palace, take a peaceful stroll at Meiji Shrine, be amazed by the bustle at Sensoji Temple, and enjoy verdant views over Tokyo at Tokyo Tower.

Open-Air Folk House Museum

Step back in time at the Open-Air Folk House Museum, home to preserved buildings from the Edo Period, including traditional gassho-zukuri farmhouses, samurai houses and merchant homes.

Shinjuku & Shibuya

Visit Meiji Jingu, the most important and popular Shinto shrine in Tokyo. Be amazed by the bustle at Shibuya Crossing, and explore thriving Shinjuku, centred around the busiest railway station in the world.

Gardens of Tokyo

Experience two of Tokyo's most historic gardens: the Imperial Palace East Gardens and Hamarikyu Garden, an Edo Period Japanese garden surrounded by the Shiodome district's futuristic skyscrapers, a great example of how Japan is the land of contrasts.

Uno

Kurashiki & Korakuen Garden

Visit Korakuen Garden, one of the best landscape gardens in Japan before exploring Kurashiki, famous for its white buildings. Discover the oldest private collection of Western art at the Ohara Art Museum.

Kurashiki

Enjoy Ohashi House, a 200-year-old Edo-period merchant's house and the Kurashiki Folkcraft Museum, boasting the finest collection of folk craft in all Japan, and include woodwork, lacquer ware, glassware, bamboo ware and textiles.

Okayama Castle & Korakuen Garden

Soak up the views of Okayama Castle with its black façade, which led people to begin referring to it as Ujo, or “Crow Castle”. Roam the spacious grounds of Korakuen Garden with many areas to explore and discover.

Japanese Sword & Bizen Pottery

Discover the Bizen Pottery Museum to learn about the world-famous Bizenware pottery, with a history spanning 1,000 years. Continue to Osafune, once known as a blacksmith town, and visit the Bizen Osafune Sword Museum.

Naoshima Island

Explore the artistic island of Naoshima - known for its modern art museums, architecture, and sculptures including the famous giant pumpkin created by Yayoi Kusama. Visit one of the island's icons – the Benesse House, designed by star architect Ando Tadao. Continue on to the Art House Project, a collection of abandoned houses, workshops, a temple, and a shrine that have been converted into art installations.

Scenic Enrich

Our Scenic Enrich encounters take you behind the scenes to enjoy private access and special moments you will treasure forever.

Tokyo Shinto Shrine & Sake Barrel Ceremony

Encounter the magic of Shinto, the indigenous Japanese faith. Also known as The-Way-Of-The-Gods, Shinto holds the belief that everything in our world is inhabited by kami, divine spirits. Taking place at a Shinto Shrine, the traditional Shinto ceremony is woven with rituals that have become intertwined in the fabric of the country's culture. Enjoy the scents and sounds of temple life: the ringing of the bell, the fragrance of burning incense, the drumming and chanting of the monks, performing their rituals. Relax in its tranquility. Participate in the 300-year-old traditional sake barrel ceremony to wish for good luck and prosperity. This ceremony is a deeply symbolic ritual and a culturally immersive Japanese experience.

Kanazawa Geisha Experience

Experience the elegance and hospitality of a trained Geisha in an exclusive performance of a lifetime. Only 48 performers entertain across three teahouse districts in Kanazawa, and the opportunity for you to share a couple of hours in their company is incredibly rare. Spend an evening being entertained and serenaded by these fascinating women. Enjoy performances of traditional dances and songs from ancient Kabuki and Noh theatre recitals that have evolved into a controlled form of dance. Every gesture tells a story, every look expresses emotion, and only a true expert can understand the gentle symbolism. Geisha also train in the Japanese shamisen, a notoriously complex, three-stringed instrument that many spend their whole lives mastering. Enjoy a traditional Sake Barrel Breaking Ceremony that is said to bring good fortune. A quintessential Japanese experience.



- A Toshongu Shrine, Shimizu
- B Saké Barrel Breaking Ceremony
- C Geisha Ceremony



Scenic Eclipse Travel Tailored to You

A



Designed for you

Our expert Journey Designers have meticulously considered each and every itinerary. This includes all pre-booked internal flights, as well as transfers from your arrival airport to the starting point of your journey. It's this level of consideration that comes as standard with Scenic and something you can expect throughout your time with us.

Upgrade your flight

Our brochure prices are based on Economy flights from London Heathrow* but why not make your journey even more memorable by treating yourself to a flight upgrade? Premium Economy and Business Class flight upgrades are available on request at a supplement. Contact us today to find out more.

A Economy flights

B Departures from a choice of up to 15 regional airports†

NB: Some flights may be indirect.

*Supplements may apply if travelling on non-specific routes and regional departure points. Supplements may apply for regional departures.

Seamless travel is integral, and it all begins before you even step foot on board Scenic Eclipse. We've made getting to your destination, and travelling home, both pleasurable and convenient by including flights from a choice of UK airports*.

You'll arrive feeling relaxed, refreshed and ready for your journey of a lifetime, thanks to our tailored travel arrangements.



Fly locally

Thanks to our close partnerships with leading world-class airlines, you can fly from a choice of up to 15 regional airports*, meaning you can start your journey from a convenient airport close to your home. Your chosen flight will connect seamlessly with one of our handcrafted itineraries to ensure your journey is one of complete comfort, convenience and luxury. To find the closest airport to suit all your travel plans, call our specialist team on 0808 189 2824.



CRUISE WITH CONFIDENCE

If you've been looking forward to your next Scenic journey,
now is the time to book and travel with confidence.

You're in Safe Hands

From the moment you book with Scenic, we want you to feel the benefit of our awardwinning service and luxury. We are committed to delivering the highest standards for our guests and ensuring you have complete peace of mind when booking and travelling with us.

The ABTA & ATOL Reassurance

We work closely with the Association of British Travel Agents (ABTA) and hold an ATOL (Air Travel Organiser's Licence) to give you the confidence you need when making a booking, giving you the financial peace-of-mind you need.



2023 SPECIAL OFFERS

Book early to secure your preferred travel date and suite for travel in 2023. Enjoy Super Earlybird savings of up to 20% by combining our special pre-payment and Earlybird offers.

SUPER EARLYBIRDS

SAVE UP TO 20%*

on your cruise when you pay in full
12 months prior to departure.
Available on all suites.

EARLYBIRDS

SAVE UP TO 10%*

on your cruise.
Strictly limited on selected suites.



Enjoy £1,000~ per couple suite upgrade credit in addition to your Earlybird savings.
on selected suites

Add a land journey to your cruise or combine two consecutive cruises for an Ultimate Journey and guarantee your 10% Earlybird savings.

*These terms and conditions are additional to the full terms and conditions contained on pages 48-51 and on scenic.co.uk/terms-and-conditions. All bookings are subject to our full terms and conditions. Earlybird (EB) and Super Earlybird (SEB) Offers: Strictly limited suites available on set departures, subject to availability and until sold out. Offers and discounts are non-transferable, non-refundable and cannot be redeemed for cash. Offers cannot be combined with any other offer and may be withdrawn at any time. Offers are valid for new bookings only. *EB Fare is up to 10% off the cruise fare only. *SEB offer of up to 20% saving is based on a combination of the 10% EB Cruise Fare offer and 10% Pay In Full offer and is valid for new bookings until Sold Out, subject to availability. SEB offers are available on all cabins, excluding categories D, GP, P, and OP. SEB offers are for new bookings only and not available for bookings using a Future Travel Credit (FTC) Voucher. Up to 10% Pay In Full offer is available on all suites, full payment must be received 12 months prior to the discount to apply. If the Super Earlybird or Pay In Full offers are available for booking within 12 months of departure, full payment is due within 7 days from booking. Once sold out or if full payment is not received the standard Fare will apply. *Suite Upgrade Credit Offer is valid on new bookings only. £1,000 per couple Suite Upgrade Credit is redeemable against suite upgrades on selected 2023 voyages. Excludes suite categories D, GP, S, P, SA, SB, OP & OT. Per couple credit is based on twin sharing. Full payment must be made at the time of booking. Offers are applicable on select suites and departures, subject to availability and until sold out. Offers and discounts are non-transferable, non-refundable and cannot be redeemed for cash. Combinable with SEB & EB offers. For full terms and conditions visit scenic.co.uk/terms-and-conditions



Kyoto, Japan
N35° 0' E135° 46'





° JAPAN

Where Luxury Meets Discovery.

— Explore the land of ornate and ancient well preserved cultures, coexisting harmoniously, as you are introduced to the unseen riches of Japan on Scenic Eclipse.

From the auspicious red crowned crane to poignant World War memorials, explore this intriguing Land of the Rising Sun in truly all-inclusive ultra-luxury.

After a day of exhilarating discovery, rejuvenate, relax and indulge with your choice of truly all-inclusive unrivalled dining and wellness[#] experiences.



Goryokaku Park, Hakodate, Japan

° Cultural Wonders of Japan

Insight into Japan's Past

Enjoy a voyage through Japan's intriguing history. From catching a glimpse of the ancient Jomon era to learning about the Samurais of the Edo period, Japan's west coast will captivate you in every way. Discover the country's tough past, witness it's mesmerising traditions and cultures as you immerse in the immaculate lush scenery.

Sail down the west coast of Japan to view regions largely untouched by tourism, including Aomori where you will see one of the largest and most preserved ancient archaeological sites. Experience a glimpse into Japan's feudal past, learning of the Samurais, Cold War spies and World War II history. Explore the many faces of Japan on board Scenic Eclipse.

⌚ 12 Day 📍 Otaru > Seoul **NEW**

Day 1

UK > Otaru, Japan

Fly from the UK to Otaru, Japan.

Day 2

Otaru

Welcome to Otaru, enjoy an overnight stay.

Day 3

Otaru, Japan

Transfer to Scenic Eclipse where your journey into wonder begins with a warm greeting by the crew as you step on board. Raise your glass this evening and toast the start of your ultra-luxury cruise.

Meals: B.D

Day 4

Hakodate 🍷 🍴

Located on the southern tip of the island of Hokkaido,

Hakodate was one of the first ports that opened to international trade. The international influence can be seen in the sophisticated architectural styles, juxtaposed against the city's traditional temples. One of the most underrated Japanese cities, Hakodate is well-known for the panoramic views from Mount

Hakodate that encompasses the city, harbour and mountains in the distance. **Freechoice:** Discover the history of Goryokaku, or see the highlights of Hakodate. Explore Onuma Quasi-National Park, or enjoy an evening tour to the summit of Mt. Hakodate for sweeping views of the city at night.

Discovery: Hike up the active volcano Mt. Esan with a local guide.

Meals: B.L.D

Day 5

Aomori 🍷

Superb seafood, riveting modern art and the world's largest virgin beech forest, Aomori is a hidden gem that is starting to find its place on the map. This ultra-modern port was rebuilt after World War II, and filled with attractions that will reveal a different side of Japan.

Freechoice: Experience the charm of the Aomori on a walking tour, including visiting the Nebuta Warasse museum, or learn about 'Kogin-sashi' embroidery. Choose to visit Hirosaki Castle Park, one of only 11 castles in all of Japan to maintain the original main donjon structure or visit the Sannai Maruyama Archaeological Site, one of the most complete and best preserved Jomon Period villages in Japan.

Meals: B.L.D

Day 6

Sado Island, Ogi Harbour 🍷 🍴

Sado is believed to have been inhabited for over 10,000 years, and even finds mention in Japanese creation stories. Sado Island is a miniature Japan, showcasing every kind of coastal landform seen in Japan and a blend of cultures introduced by previous exiles to the island.

Freechoice: Learn the history of the largest gold mine in Japan, Sado Kinzan, or explore the small town of Ogi by e-bike.

Alternatively, join a special taiko-drumming workshop and enjoy a performance before visiting the Hokusetsu Sake Brewery, or choose to travel to the Shukuneeegi Village and take a ride in a Tarai-bune (tub boat).

Meals: B.L.D

Day 7

Kanazawa 🍷 🍴

Exceptional historical sites, traditional cuisine, renowned art museums and refined craftwork. Throughout history Kanazawa, meaning 'the golden marsh', has been one of Japan's most important cities for culture and art.

Freechoice: Explore one of the most scenic World Heritage sites in Japan, Shirakawago village and the historic village of Gokayama, or explore the famed Kenrokuen Garden. See the highlights of Kanazawa and enjoy a gold leaf experience, or walk through the 'Kitchen of Kanazawa' before a local cooking class. Alternatively, see a tea ceremony performance.

Enrich: Experience the Japanese culture during this night to remember. Exclusive for Scenic Eclipse guests, watch Kagami-biraki, a ceremony where the lid of a round sake barrel is broken open, believed to be opening the door to luck. The joy of the sake is then shared with the group. Following a traditional performance from local Geikos (Geisha) and Maikos, meet and mingle with them to learn about the life of a Geisha in modern Japan.

Meals: B.L.D

12 Day Itinerary Otaru > Seoul

Cruise | Cruise start/finish | Overnight stay | Rail



Scenic Freechoice activity

Visit the Sannai Maruyama Archaeological Site. This is the largest, most complete, and best preserved village from the Jomon Period dating back to 13000-300 BC.

Day 8

Maizuru

With a Naval history from 1901, Maizuru was the main port in Japan to receive repatriated soldiers after World War II. Home to the Japanese Navy Base, the closest to North Korea, local fisherman to this day report any suspicious boats who they believe may be North Korean spies.

Freechoice: Learn the naval history at Red Brick Park before seeing the stunning view from Goro Sky Tower, or explore northern Kyoto and Maizuru's Amanohashidate sandbar. Spend the day taking in Kyoto's top highlights, including Nijo Castle and the gilded Golden Pavilion, or see the famous Japanese Garden at Tenryūji Temple in Arashiyama and the traditional thatched roof farmhouses in Miyama. Alternatively, join a washi experience that delves into the heritage and beauty of this ancient paper-making tradition.

Meals: B.L.D

Day 9

Sakaiminato

Located in Tottori Prefecture the city lies beneath the dominant feature in the sky to the east, Mt. Daisen also known as 'mini-Fuji'.

Freechoice: Visit the volcanic Mount Daisen or learn about local art and Japanese garden design with a visit to Adachi Museum of Art and Gardens and Yushien Japanese Garden. Choose to explore the samurai district of Matsue or the Grand Shrine of Izumo, one of Japan's most important shrines. Alternatively, visit the Yonago Waterbird Sanctuary.

Meals: B.L.D

Day 10

Hagi

Hagi is best known for its preserved former castle town, being fortunate enough to avoid all major disasters since the Edo Period. Located on the South Western corner of Honshu facing the Sea of Japan, this small town has a fascinating history. Wander through the small streets lined with cross-hatched namako walls and samurai houses, stunning castle ruins and traditional potteries.

Freechoice: Join a walking tour of Hagi Castle Town, or visit Rurikoji temple, one of Japan's most beautiful five-story pagodas. Spend the day in Akiyoshidai Quasi-National Park taking in the breathtaking views or choose to see the works of artist Yoshika Taibi on a private tour with their son. Alternatively visit a local museum to learn more about the fascinating world of Ukiyo-e and its influence on the art world at large.

Meals: B.L.D

Day 11

Busan, South Korea > Seoul

Disembark Scenic Eclipse and board the KTX bullet train to Seoul for your overnight stay.

Meals: B

Day 12

Seoul > UK

Transfer to the airport for your flight home.

Meals: B

The itinerary on this page is a guide only and may be amended for operational reasons. As such Scenic cannot guarantee the cruises will operate unaltered from the itineraries stated above. For full terms and conditions refer to pages 48-51.



Your all-inclusive cruise features:

- Return flights from London Heathrow (regional departures available on request)
- Up to 228 guests on board for a truly intimate experience
- Spacious all Verandah Suites
- Butler service for every guest
- Up to 10 on board dining experiences, from casual to fine dining
- Complimentary beverages all day, every day
- Scenic Discovery excursions
- Your choice of Scenic Freechoice activities
- Exclusive Scenic Enrich experiences
- Entertainment in the state-of-the-art theatre
- All tipping and gratuities

For full itinerary and latest availability and Earlybird offers scan QR code



Voyage Prices & Offers

Voyage 301A

Departure Dates		June 03 2023		
Cat.	Suite	Deck	Full Fare	Earlybird* Super Earlybird*
D	Verandah	5	SOLD OUT	—
DA	Deluxe Verandah	5	£11,765	£10,890 £10,015
DB	Deluxe Verandah	5	£11,925	£11,035 £10,140
DD	Grand Deluxe	5	£12,245	£11,320 £10,395
C	Verandah	6	£12,165	£11,250 £10,335
CA	Deluxe Verandah	6	£12,325	£11,395 £10,460
CD	Grand Deluxe	6	£12,805	£11,825 £10,845
GP	Grand Panorama	6	£21,765	—
B	Verandah	7	£12,565	£11,610 £10,655
BA	Deluxe Verandah	7	£12,725	£11,755 £10,780
BD	Grand Deluxe	7	£13,205	£12,185 £11,165
A	Verandah	8	£12,965	£11,970 £10,975
AA	Deluxe Verandah	8	£13,285	£12,260 £11,230
AD	Grand Deluxe	8	£13,765	£12,690 £11,615
S	Spa	8	£15,605	£14,345 £13,085
P	Panorama	8	£21,445	—
SA	Spa	9	£15,765	£14,490 £13,215
SB	Spa	9	£15,845	£14,560 £13,275
OP	Owner's Penthouse	9	£24,485	—

FOR MORE INFORMATION ON EARLYBIRD OFFERS PLEASE SEE PAGES 16-17

Terms & Conditions: Prices shown are per person, twin share and include all discounts where applicable. Prices and availability correct as of 09/11/22. For full terms and conditions please refer to back page or visit scenic.co.uk/terms-and-conditions.



Tokyo skyline, Japan

Iconic Japan: Sacred Cultures & Nature

Japan unearthed

Sail up the east coast of Japan, seeing the contrast between futuristic Tokyo, a captivating city shining bright with neon, and the wild remote nature of Hokkaido, considered Japan's last frontier. Along the way, learn of the history of the Kumano Kodo pilgrimage routes, and Date Masamune, one of Japan's most powerful feudal lords.

Visit Hokkaido, a remarkable island that's a world away from the Japan that you may know, boasting mountains lining the horizon of national parks, and pristine lakes and rivers that you can explore during your voyage.

⌚ 12 Day 📍 Seoul > Otaru **NEW**

Day 1

UK > Seoul, South Korea

Fly from the UK to Seoul, South Korea.

Day 2

Seoul, South Korea

Welcome to South Korea. Enjoy your one night stay in Seoul.

Day 3

Busan, South Korea

This morning board the KTX bullet train and travel to Busan. A tapestry of colours rolling across the magnificent natural setting, Busan is where the locals go for a relaxing getaway, thanks to its laid-back atmosphere, urban beaches, and great street food culture. South Korea's second largest city represents a harmonious relationship between the calm sea, snaking rivers and

lush mountains. Transfer to Scenic Eclipse where your journey into wonder begins with a warm greeting by the crew as you step on board. Raise your glass this evening and toast the start of your ultra-luxury cruise.

Meals: B.D

Day 4

Matsuyama, Japan 🌸

Offering great historic insights into Japanese culture, Matsuyama is cradled between gorgeous green mountains and the peaceful Seto Inland Sea. **Freechoice:** Visit the traditional town of Uchiko, one of the remaining towns left after World War II, for a special screening of Katsuben or choose to explore the highlights of Matsuyama including the Matsuyama Castle.

Alternatively experience bathing in this special hot spring at Dogo Onsen and visit Isite-ji temple.

Meals: B.L.D

Day 5

Shingu 🌸

Crisscrossed with fast-flowing rivers and mountain trails, Shingu is a small seaside city located in Wakayama's sacred south. Nestling inside verdant mountains, this secret place is a treasure trove of lush greenery and a unique religious culture.

Freechoice: Walk around the bustling fish market and enjoy tuna and other Katsura dishes while watching a tuna carving demonstration, or discover the Sacred Land of Kumano and the Nachi Falls.

Meals: B.L.D

Day 6

Shimizu 🌸

Enjoy breakfast on your verandah or at one of the outdoor dining venues this morning as you sail into Shimizu. You will soon see why it is considered one of Japan's most beautiful ports, with Mount Fuji dominating the horizon, and history dating back to the Nara Period (710-784).

Freechoice: Board an aerial ropeway up the mountainside to the Kunoan Toshogu Shrine, or soak up the beauty of Shiraito Falls. Alternatively view more than 1,300 ukiyo-e exhibits at the Tokaido Hiroshige Art Museum.

Meals: B.L.D

Day 7

Tokyo 🌸🌸

Welcome to the city that captivates. With some neighbourhoods shining bright with neon lights and filled with futuristic architecture, others boasting glowing lanterns and traditional wooden buildings, and dozens of art galleries and cocktail bars hidden amidst concrete blocks, no two experiences in Tokyo are the same. With Scenic Eclipse docked late, experience the best of Tokyo by both day and night.

Freechoice: Explore the landmarks of Tokyo on a panoramic drive through the city, or choose a more in-depth experience on a full day tour with a local expert. Discover the structure of Tokyo Sky Tree, the tallest structure in Japan or step back in time at the Open-air Folk House Museum. Alternatively visit Meiji Jingu, the most important and popular Shinto shrine in Tokyo and be amazed by the bustle at Shibuya Crossing, or experience two of Tokyo's most historic gardens: the Imperial Palace East Gardens and Hamarikyū Garden.

Enrich: Experience the Japanese culture in an exclusive event for Scenic Eclipse guests. Take part in a Shinto Ceremony, a ritual that has been handed down in Japan since ancient times.

12 Day Itinerary Seoul > Otaru

— Cruise 📍 Cruise start/finish ① Overnight stay 🚉 Rail



🌿 Scenic Freechoice activity

Explore the Doro-kyo Gorge, one of Japan's special natural monuments of scenic beauty. Located on the headwaters of the Kitayama River, enjoy scenery of cliffs and exotic shaped rocks on a speedboat cruise.

Following, watch Kagami-biraki, a ceremony where the lid of a round sake barrel is broken open, believed to be opening the door to luck. The joy of the sake is then shared with the group.

Meals: B.L.D

Day 8

At sea

Spend the day at leisure exploring the various amenities of your luxurious Discovery Yacht. Tempt your palate at one of the dining experiences or unwind in Senses Spa.

Meals: B.L.D

Day 9

Hachinohe 🌿 🍴

Outstanding natural beauty and shared cultural history await you in Hachinohe. Located on the main Japanese island of Honshu, Hachinohe's enchanting coastline and natural splendour is known as being an inspiration for countless artists, writers and creatives. Believed to be inhabited since the Jomon Era, some 20,000 years ago, there is a great historical and cultural significance surrounding the area.

Freechoice: Delight in the local food and sake of Hachinohe, or see one of the most beautiful river valleys in the country before enjoying a local boat cruise on Lake Towada. Enjoy local seafood at a fisherman lunch while learning about the life of locals, or explore the landmarks of Hachinohe.

Discovery: Hike the Michinoku Shiohaze Trail with a local guide, past wildflowers and 100-year-old pine trees.

Meals: B.L.D

Day 10

Muroran 🌿

Muroran is a manufacturing town with beautiful scenery and delicious food. Gentle surrounding slopes provide the perfect place to stroll, listening for the chirping birds, murmuring rivers and the fresh scent of flowers. Take the time to taste the curry ramen, known to have an unbelievably delicious and addictive taste.

Freechoice: Walk the trails around Toya lake, or experience Hokkaido's most famous hot spring resort, Noboribetsu. Alternatively, learn about the life and culture of Ainu people.

Meals: B.L.D

Day 11

Otaru

Welcome to Otaru. Disembark from Scenic Eclipse after breakfast as you say farewell to the crew and transfer to your hotel for an overnight stay.

Meals: B

Day 12

Otaru > UK

Transfer to the airport for your flight to the UK.

Meals: B

The itinerary on this page is a guide only and may be amended for operational reasons. As such Scenic cannot guarantee the cruises will operate unaltered from the itineraries stated above. For full terms and conditions refer to pages 48-51



Your all-inclusive cruise features:

- Return flights from London Heathrow (regional departures available on request)
- Up to 228 guests on board for a truly intimate experience
- Spacious all Verandah Suites
- Butler service for every guest
- Up to 10 on board dining experiences, from casual to fine dining
- Complimentary beverages all day, every day
- Scenic Discovery excursion 🌿
- Your choice of Scenic Freechoice activities 🌿
- Exclusive Scenic Enrich experiences 🍴
- Entertainment in the state-of-the-art theatre
- All tipping and gratuities

For full itinerary and latest availability and Earlybird offers scan QR code



Voyage Prices & Offers

Voyage 401A

Departure Dates		June 11 2023		
Cat. Suite	Deck	Full Fare	Earlybird*	Super Earlybird*
D Verandah	5	£11,495	—	—
DA Deluxe Verandah	5	£12,215	£11,340	£10,460
DB Deluxe Verandah	5	£12,375	£11,485	£10,590
DD Grand Deluxe	5	£12,695	£11,770	£10,845
C Verandah	6	£12,615	£11,700	£10,780
CA Deluxe Verandah	6	£12,775	£11,845	£10,910
CD Grand Deluxe	6	£13,255	£12,275	£11,290
GP Grand Panorama	6	£22,215	—	—
B Verandah	7	£13,015	£12,060	£11,100
BA Deluxe Verandah	7	£13,175	£12,205	£11,230
BD Grand Deluxe	7	£13,655	£12,635	£11,610
A Verandah	8	£13,415	£12,420	£11,420
AA Deluxe Verandah	8	£13,735	£12,705	£11,675
AD Grand Deluxe	8	£14,215	£13,140	£12,060
S Spa	8	£16,055	£14,795	£13,530
P Panorama	8	£21,895	—	—
SA Spa	9	£16,215	£14,940	£13,660
SB Spa	9	£16,295	£15,010	£13,725
OP Owner's Penthouse	9	£24,935	—	—

FOR MORE INFORMATION ON EARLYBIRD OFFERS PLEASE SEE PAGES 16-17

Terms & Conditions: Prices shown are per person, twin share and include all discounts where applicable. Prices and availability correct as of 09/11/22. For full terms and conditions please refer to back page or visit [scenic.co.uk/terms-and-conditions](https://www.scenic.co.uk/terms-and-conditions).

°Grand Circumnavigation of Japan

Fushimi Inari Shrine, Kyoto

Unrivalled Discovery of Japan

Enjoy a voyage through Japan's intriguing history. Discover the country's tough past, witness its mesmerising traditions and cultures as you immerse in the immaculate lush scenery.

Explore the many faces of Japan on board Scenic Eclipse. Sail down the west coast to view regions largely untouched by tourism. Experience a glimpse into the country's feudal past, learning of the Samurais, Cold War spies and World War II history. Visit Hokkaido, a remarkable island boasting mountains lining the horizon of national parks, and pristine lakes and rivers.

⌚ 20 Day 📍 Otaru > Otaru

Day 1 UK > Otaru, Japan

Fly from the UK to Otaru, Japan.

Day 2 Otaru

Welcome to Otaru, where you'll enjoy an overnight stay.

Day 3 Otaru

Transfer to Scenic Eclipse. Raise your glass this evening and toast the start of your ultra-luxury cruise.

Meals: B.D

Day 4 Hakodate 🌸 🍷

Freechoice: Discover the history of Goryokaku, or see the highlights of Hakodate. Explore Onuma Quasi-National Park, or enjoy an evening tour to the summit of Mt. Hakodate for sweeping views of the city at night.

Discovery: Hike up the active volcano Mt. Esan with a local guide.

Meals: B.L.D

Day 5 Aomori 🌸

Freechoice: Experience the charm of the Aomori on a walking tour, including visiting the Nebuta Warasse museum, or learn about 'Kogin-sashi' embroidery. Choose to visit Hirosaki Castle Park, one of only 11 castles in all of Japan to maintain the original main donjon structure or visit the Sannai Maruyama Archaeological Site one of the most complete and best preserved Jomon Period villages in Japan.

Meals: B.L.D

Day 6 Sado Island, Ogi Harbour 🌸

Freechoice: Learn the history of the largest gold mine in Japan, Sado Kinzan, or explore the small town of Ogi on an e-bike. Alternatively, join a special taiko-drumming workshop and enjoy a performance before visiting the Hokusetsu Sake Brewery,

or choose to travel to the Shukuneegi Village and take a ride in a Tarai-bune (tub boat).

Meals: B.L.D

Day 7

Kanazawa 🌸 🍷

Freechoice: Explore one of the most scenic World Heritage sites in Japan, Shirakawago village and the historic village of Gokayama, or explore the famed Kenrokuen Garden. See the highlights of Kanazawa and enjoy a gold leaf experience, or walk through the 'Kitchen of Kanazawa' before a local cooking class. Alternatively, see a tea ceremony performance.

Enrich: Watch *Kagami-biraki*, a ceremony where the lid of a round sake barrel is broken open. The sake is then shared with the group. Then, watch a Geisha perform traditional dances and songs.

Meals: B.L.D

Day 8 Maizuru 🌸

Freechoice: Learn the naval history at Red Brick Park before seeing the stunning view from Goro Sky Tower, or explore northern Kyoto and Maizuru's Amanohashidate sandbar. Spend the day taking in Kyoto's top highlights, including Nijo Castle and the gilded Golden Pavilion, or see the famous Japanese Garden at Tenryuji Temple in Arashiyama and the traditional thatched roof farmhouses in Miyama.

Alternatively, join a washi experience that delves into the heritage and beauty of this ancient paper-making tradition.

Meals: B.L.D

Day 9

Sakaiminato 🌸

Freechoice: Visit the volcanic Mount Daisen or learn about local art and Japanese garden design. Alternatively explore the samurai district of Matsue or the Grand Shrine of Izumo, one of Japan's most important shrines.

Meals: B.L.D

Day 10 Hagi 🌸

Freechoice: Join a walking tour of Hagi Castle Town, or visit Rurikoji temple, one of Japan's most beautiful five-story pagodas. Spend the day in Akiyoshidai Quasi-National Park taking in the breathtaking views or choose to see the works of artist Yoshika Taibi on a private tour with their son. Alternatively visit a local museum to learn more about the fascinating world of Ukiyo-e and its influence on the art world at large.

Meals: B.L.D

Day 11

Busan, South Korea

Enjoy a day at leisure.

Meals: B.L.D

20 Day Itinerary Otaru > Otaru

Day 12

Matsuyama, Japan

Freechoice: Visit Uchiko, one of the remaining towns left after World War II, for a special screening of Katsuben or explore the highlights of Matsuyama including the Matsuyama Castle. Alternatively experience bathing at Dogo Onsen and visit Isite-ji temple.

Meals: B.L.D

Day 13

Shingu

Freechoice: Walk around the bustling fish market and enjoy Katsuura dishes while watching a tuna carving demonstration, or discover the Sacred Land of Kumano and the Nachi Falls

Meals: B.L.D

Day 14

Shimizu

Freechoice: Board an aerial ropeway up the mountainside to the Kunoza Toshogu Shrine, or soak up the beauty of Shiraito Falls. Alternatively view more than 1,300 ukiyo-e exhibits at the Tokaido Hiroshige Art Museum.

Meals: B.L.D

Day 15

Tokyo

Freechoice: Explore Tokyo on a panoramic drive through the city, or choose a more in-depth experience on a full day tour with a local expert. Discover the structure of Tokyo Sky Tree or step back in time at the Open-air Folk House Museum. Alternatively, visit Meiji Jingu, the most important Shinto shrine in Tokyo, be amazed by the bustle at Shibuya Crossing, or experience two of Tokyo's most historic gardens.

Enrich: Take part in a Shinto Ceremony, a ritual that has been handed down in Japan since ancient times. Then, watch Kagami-biraki, a ceremony where the lid of a round sake barrel is broken open. The joy of the sake is then shared with the group.

Meals: B.L.D

Day 16

At sea

Spend the day at leisure exploring the various amenities of your luxurious Discovery Yacht.

Meals: B.L.D

Day 17

Hachinohe

Freechoice: Delight in the local food and sake of Hachinohe, or see one of the most beautiful river valleys in the country before enjoying a local boat cruise on Lake Towada. Enjoy local seafood at a fisherman lunch while learning about the life of locals, or explore the landmarks of Hachinohe

Discovery: Hike the Michinoku Shiokaze Trail with a local guide, past wildflowers and 100-year-old pine trees.

Meals: B.L.D

Day 18

Muroran

Freechoice: Walk the trails around Toya lake, or experience Hokkaido's most famous hot spring resort, Noboribetsu. Alternatively, learn about the life and culture of Ainu people.

Meals: B.L.D

Day 19

Otaru

Welcome to Otaru. Disembark from Scenic Eclipse after breakfast as you say farewell to the crew and transfer to your hotel for an overnight stay.

Meals: B

Day 20

Otaru > UK

Transfer to the airport for your flight to the UK.

Meals: B

The itinerary on this page is a guide only and may be amended for operational reasons. As such Scenic cannot guarantee the cruises will operate unaltered from the itineraries stated above. For full terms and conditions refer to pages 48-51.



Your all-inclusive cruise features:

- Return flights from London Heathrow (regional departures available on request)
- Up to 228 guests on board for a truly intimate experience
- Spacious all Verandah Suites
- Butler service for every guest
- Up to 10 on board dining experiences, from casual to fine dining
- Complimentary beverages all day, every day
- Scenic Discovery excursions
- Your choice of Scenic Freechoice activities
- Exclusive Scenic Enrich experiences
- Entertainment in the state-of-the-art theatre
- All tipping and gratuities

For full itinerary and latest availability and Earlybird offers scan QR code



Voyage Prices & Offers

Voyage 302A

Departure Dates			June 03 2023		
Cat.	Suite	Deck	Full Fare	Earlybird*	Super Earlybird*
D	Verandah	5	£20,550	—	—
DA	Deluxe Verandah	5	£21,990	£20,235	£18,480
DB	Deluxe Verandah	5	£22,310	£20,525	£18,740
DD	Grand Deluxe	5	£22,950	£21,100	£19,250
C	Verandah	6	£22,790	£20,955	£19,120
CA	Deluxe Verandah	6	£23,110	£21,245	£19,380
CD	Grand Deluxe	6	£24,070	£22,110	£20,145
GP	Grand Panorama	6	£41,990	—	—
B	Verandah	7	£23,590	£21,675	£19,760
BA	Deluxe Verandah	7	£23,910	£21,965	£20,020
BD	Grand Deluxe	7	£24,870	£22,830	£20,785
A	Verandah	8	£24,390	£22,395	£20,400
AA	Deluxe Verandah	8	£25,030	£22,975	£20,915
AD	Grand Deluxe	8	£25,990	£23,835	£21,680
S	Spa	8	£29,670	£27,150	£24,625
P	Panorama	8	£41,350	—	—
SA	Spa	9	£29,990	£27,435	£24,880
SB	Spa	9	£30,150	£27,580	£25,010
OP	Owner's Penthouse	9	£47,430	—	—

FOR MORE INFORMATION ON EARLYBIRD OFFERS PLEASE SEE PAGES 16-17

Terms & Conditions: Prices shown are per person, twin share and include all discounts where applicable. Prices and availability correct as of 09/11/22. For full terms and conditions please refer to back page or visit scenic.co.uk/terms-and-conditions.

Japan: A Journey Through Time

Tokyo skyline, Japan

A Window to Japan's Captivating Past

Take a voyage through Japan's intriguing history. From catching a glimpse of the ancient Jomon era to learning about the samurais of the Edo period, Japan's west coast will captivate you in every way.

Sail down the west coast of Japan to view regions largely untouched by tourism. Get a glimpse into Japan's feudal past, learning of the samurais, Cold War spies and World War II history. Visit Geoparks, islands that are blessed with natural scenery including majestic cliffs, dense forests and rolling fields of green. See the many faces of Japan in ultra-luxury on board Scenic Eclipse.

12 Days Otaru > Kobe (Osaka) **NEW**

Day 1

UK > Otaru, Japan

Fly from the UK to Otaru, Japan.

Day 2

Otaru

Welcome to Otaru, where you'll enjoy an overnight stay.

Day 3

Otaru

Transfer to Scenic Eclipse where your journey into wonder begins.

Meals: B.D

Day 4

Aomori

Aomori is a hidden gem. This ultra-modern port was rebuilt after World War II, and is filled with attractions that will reveal a different side of Japan.

Freechoice: Experience the charm of Aomori on a walking tour, or learn about "Kogin-

sashi" embroidery. Choose to visit Hirosaki Castle Park, one of only 11 castles in all of Japan to maintain the original main donjon structure or visit the Sannai Maruyama Archaeological Site one of the most complete and best preserved Jomon Period villages in Japan.

Meals: B.L.D

Day 5

Hakodate

Located on the southern tip of the island of Hokkaido, Hakodate was one of the first ports that opened to international trade.

Freechoice: Discover the history of Goryokaku, or see the highlights of Hakodate. Explore Onuma Quasi-National Park, or visit the Hakodate Morning Market with a local expert.

Discovery: Hike up the active volcano Mt. Esan with a local guide.

Meals: B.L.D

Day 6

Sado Island

Freechoice: Learn the history of the largest gold mine in Japan, Sado Kinzan, or explore the small town of Ogi on an e-bike. Alternatively, join a special taiko-drumming workshop and enjoy a performance before visiting the Hokusetsu Sake Brewery, or choose to travel to the Shukuneeji Village and take a ride in a Tarai-bune (tub boat).

Meals: B.L.D

Day 7

Kanazawa

Exceptional historical sites, traditional cuisine, renowned art museums and refined craftwork.

Freechoice: Explore one of the most scenic World Heritage sites in Japan, Shirakawago village and the historic village of Gokayama, or explore the famed Kenrokuen Garden. See the highlights of Kanazawa, or walk through the "Kitchen of Kanazawa" before a local cooking class. Alternatively, see a tea ceremony performance.

Enrich: *Experience the Japanese culture during this night to remember. Exclusive for Scenic Eclipse guests, watch Kagami-biraki, a ceremony where the lid of a round sake barrel is broken open, believed to be opening the door to luck. The joy of the sake is then shared with the group. Following, you will*

watch a story being told in a local Geisha performance of traditional dances and songs.

Meals: B.L.D

Day 8

Maizuru

Freechoice: Learn the naval history at Red Brick Park before seeing the stunning view from Goro Sky Tower, or explore northern Kyoto and Maizuru's Amanohashidate sandbar. Spend the day taking in Kyoto's top highlights, including Nijo Castle and the gilded Golden Pavilion, or see the famous Japanese Garden at Tenryuji Temple in Arashiyama and the traditional thatched roof farmhouses in Miyama. Alternatively, join a washi experience that delves into the heritage and beauty of this ancient paper-making tradition.

Meals: B.L.D

Day 9

Hagi

Freechoice: Join a walking tour of Hagi Castle Town, or visit Rurikoji temple, one of Japan's most beautiful five-story pagodas. Spend the day in Akiyoshidai Quasi-National Park taking in the breathtaking views or choose to see the works of artist Yoshika Taibi on a private tour with their son. Alternatively visit a local museum to learn more about the fascinating world of Ukiyo-e and its influence on the art world at large.

Meals: B.L.D

12 Day Itinerary Otaru > Kobe (Osaka)

— Cruise 📍 Cruise start/finish ① Overnight stay ##### Rail

Day 10

Busan, South Korea 🌸

A tapestry of colours rolling across the magnificent natural setting, Busan is where the locals go for a relaxing getaway, thanks to its laid-back atmosphere, urban beaches, and great street food culture.

Freechoice: Visit the Gamcheon Culture Village, once a modest mountainside community that has been transformed into an art hotspot or Haedong Yonggungsa Temple, a Buddhist temple built in 1376 built on a cliff face. Alternatively enjoy a city tour of Gyeongju.

Meals: B.L.D

Day 11

Matsuyama, Japan 🌸

Offering great historic insights into Japanese culture, Matsuyama is cradled between gorgeous green mountains and the peaceful Seto Inland Sea.

Freechoice: Visit the traditional town of Uchiko, one of the remaining towns left after World War II, for a special screening of Katsuben or choose to explore the highlights of Matsuyama including the Matsuyama Castle. Alternatively experience bathing in this special hot spring at Dogo Onsen and visit Isite-ji temple.

Meals: B.L.D

Day 12

Hiroshima 🌸

Known for the devastating atomic bomb blast that ravaged the city and its inspiring status today as a symbol of peace and rebirth, Hiroshima is a destination steeped in history and outstanding natural beauty.

Freechoice: Walk through the Peace Memorial Park and Museum then choose to travel to Shukkeien Garden, a lovely Japanese garden, or visit Saijo, one of the most well-known areas for Sake making in all of Japan. Alternatively, discover the UNESCO World Heritage, Itsukushima Shrine on Miyajima Island.

Meals: B.L.D

Day 13

Uno 🌸

The port of Uno will immediately immerse you in local works of art.

Freechoice: Walk in one of Japan's most beautiful landscape gardens, Korakuen Garden or spend the day in Kurashiki known for the lovely, white walls of its buildings and visit the Kurashiki Folkcraft Museum. Explore the Okayama Castle or learn about the world-famous Bizenware pottery and the history, culture, and creation process of Japanese swords. Alternatively, get a ferry to Naoshima island known for its modern art museums, architecture, and sculptures.

Meals: B.L.D

Day 14

Kobe (Osaka) > UK

Welcome to Osaka. Disembark from Scenic Eclipse after breakfast as you say farewell to the crew. Transfer to the airport for your overnight flight to the UK.

Meals: B

Day 15

Arrive UK

Welcome home.

The itinerary on this page is a guide only and may be amended for operational reasons. As such Scenic cannot guarantee the cruises will operate unaltered from the itineraries stated above. For full terms and conditions refer to pages 48-51.



Your all-inclusive cruise features:

- Return flights from London Heathrow (regional departures available on request)
- Up to 228 guests on board for a truly intimate experience
- Spacious all Verandah Suites
- Butler service for every guest
- Up to 10 on board dining experiences, from casual to fine dining
- Complimentary beverages all day, every day
- Scenic Discovery excursion 🚶
- Your choice of Scenic Freechoice activities 🌸
- Exclusive Scenic Enrich experiences 🎧
- Entertainment in the state-of-the-art theatre
- All tipping and gratuities

For full itinerary and latest availability and Earlybird offers scan QR code



Voyage Prices & Offers

Voyage D11A

Departure Dates		Jun 19 2023		
Cat. Suite	Deck	Full Fare	Earlybird*	Super Earlybird*
D Verandah	5	£12,580	-	-
DA Deluxe Verandah	5	SOLD OUT	SOLD OUT	SOLD OUT
DB Deluxe Verandah	5	SOLD OUT	SOLD OUT	SOLD OUT
DD Grand Deluxe	5	£14,170	£13,035	£13,035
C Verandah	6	£14,050	£12,925	£12,925
CA Deluxe Verandah	6	SOLD OUT	SOLD OUT	SOLD OUT
CD Grand Deluxe	6	SOLD OUT	SOLD OUT	SOLD OUT
GP Grand Panorama	6	SOLD OUT	SOLD OUT	SOLD OUT
B Verandah	7	SOLD OUT	SOLD OUT	SOLD OUT
BA Deluxe Verandah	7	SOLD OUT	SOLD OUT	SOLD OUT
BD Grand Deluxe	7	SOLD OUT	SOLD OUT	SOLD OUT
A Verandah	8	SOLD OUT	SOLD OUT	SOLD OUT
AA Deluxe Verandah	8	SOLD OUT	SOLD OUT	SOLD OUT
AD Grand Deluxe	8	SOLD OUT	SOLD OUT	SOLD OUT
S Spa	8	SOLD OUT	SOLD OUT	SOLD OUT
P Panorama	8	SOLD OUT	SOLD OUT	SOLD OUT
SA Spa	9	SOLD OUT	SOLD OUT	SOLD OUT
SB Spa	9	SOLD OUT	SOLD OUT	SOLD OUT
OP Owner's Penthouse	9	£30,975	-	-

FOR MORE INFORMATION ON EARLYBIRD OFFERS PLEASE SEE PAGES 16-17

Combinable with the following luxury land journeys:



- 10 Day Secrets of Japan (OAKT) – page 38

Visit sceniceclipse.com for more information

Terms & Conditions: Prices shown are per person, twin share and include all discounts where applicable. Prices and availability correct as of 09/11/22. For full terms and conditions please refer to back page or visit scenic.co.uk/terms-and-conditions.



The Islands of Japan

Seigantoji Temple, Shingu

Japan unearthed

See Japan from a local's perspective, visiting incredible destinations that are unknown to many. Travel along all four main Islands of Japan, learning of the diverse history on Kyushu, admiring the scenery of Shikoku, and exploring the popular highlights of Honshu before finishing in Hokkaido.

Experience the contrast between the futuristic Tokyo, a captivating city shining bright with neon, and the small local destinations that are only known to the locals, including Jeju, a nature lovers dream. Along the way learn of the devastation caused by World War II and the inspiring efforts to rebuild. Embrace nature's wonders in unique sand baths or exploring lava caves, and gain an understanding of the local culture while participating in workshops to learn Japanese traditions.

⌚ 15 Day 📍 Kobe (Osaka) > Otaru **NEW**

Day 1 UK > Kobe (Osaka), Japan

Fly from the UK overnight to Kobe (Osaka). Regional airports are available on request.

Day 2 Kobe (Osaka)

Welcome to the bustling Osaka where you will enjoy an overnight stay.

Day 3 Kobe (Osaka)

Transfer to Scenic Eclipse where your journey into wonder begins with a warm greeting by the crew as you step on board. Raise your glass this evening and toast the start of your luxurious cruise.

Meals: D

Day 4 At sea

Relaxation beckons, and with so many choices on board you will be surprised how quickly time passes.

Meals: B.L.D

Day 5 Nagasaki 🌸

Nagasaki is a port unlike any other. Made up of foreign influence, the city has been transformed into the bustling and beautiful destination that it is today.

Freechoice: Enjoy the panoramic views from Mt. Inasa Observatory or choose to visit The Atomic Bomb Museum & Peace Park. Explore the birthplace of magnificent Japanese porcelain or learn of the history of Christians in

Nagasaki and their attempts to maintain their faith during the Christianity ban. Alternatively, experience making candles to produce for the 'Light of Peace' ceremony.

Meals: B.L.D

Day 6 Jeju, South Korea 🌸 🌿

A popular destination for local tourism, Jeju is a nature lover's dream. Romantic sunrises, majestic coastlines and a mesmerising volcano.

Freechoice: See the magnificent Seongsan Ilchulbong Tuff Cone or discover an underground world full of mystery and charm as you explore the Manjanggul Lava Tube. Visit the Jeju Folklore & Natural History Museum and learn the legend of the Yongyeon Pond and Yongduam Rock or walk around the Sangumburi crater, home to more than 400 species of plants and birds.

Discovery: Walk the Eoseungsaengak trail of Mt. Hallasan with a local guide and admire the impressive views.

Meals: B.L.D

Day 7 Kagoshima, Japan 🌸 🌿

Discover the city of Kagoshima, characterised by the active volcano Sakurajima rising in the distance.

Freechoice: Visit the highlights of Kagoshima including the lunar landscapes of Sakurajima

Island, the Senganen garden and the Ruins of Reverberatory Furnace. Choose to visit the well-preserved residences and gardens of the Samurai or taste Shochu and learn of Satsuma Yaki pottery. Discover one of Japan's most celebrated hot springs for a sand bath experience or learn about the local cuisine, Bonito flakes, before making your own Dashi. Alternatively, travel up the Kirishima Mountain range to a local tea farm where the farmers will walk you through brewing your own tea.

Meals: B.L.D

Day 8 Kochi 🌸 🌿

Take the time to stroll through the laid back city of Kochi, noticing the small details of Japan you may miss in the hustle and bustle of the big cities.

Freechoice: Learn the history of Kochi while visiting the Kochi Castle and Katsurahama, or explore Chikurinji Temple, a quaint Shingon temple located in Mt. Godai. Enjoy the magnificent scenery of Niyodo River on your way to the Washi paper making workshop or visit Ryugado cave, a limestone cave that is known as one of the most beautiful caves in Japan.

Meals: B.L.D

15 Day Itinerary Kobe (Osaka) > Otaru

— Cruise | Cruise start/finish | ① Overnight stay | Rail

Day 9 Shingu

Crisscrossed with fast-flowing rivers and mountain trails, Shingu is a small seaside city located in Wakayama's sacred south. **Freechoice:** Walk around the bustling fish market and enjoy tuna and other Katsuura dishes while watching a tuna carving demonstration, or discover the Sacred Land of Kumano by walking along Mt. Nachi, admiring the Kumano Nachi Shrine and Seigantoji temple that is located at the mountaintop beside the famous Nachi Falls.

Meals: B.L.D

Day 10-11 Tokyo

With Scenic Eclipse docked overnight, experience the best of Tokyo by both day and night.

Freechoice: Explore the landmarks of Tokyo on a panoramic drive through the city. Discover the structure of Tokyo Sky Tree, the tallest structure in Japan or step back in time at the Open-air Folk House Museum. Alternatively visit Meiji Jingu, the most important and popular Shinto shrine in Tokyo and be amazed by the bustle at Shibuya Crossing, or experience two of Tokyo's most historic gardens: the Imperial Palace East Gardens and Hamarikyu Garden.

Enrich: Experience the Japanese culture in an exclusive event for Scenic Eclipse guests. Take part in a Shinto Ceremony, a ritual that has been handed down in Japan since ancient times. Following, watch Kagami-biraki, a ceremony where the lid of a round sake barrel is broken open, believed to be opening the door to luck. The joy of the sake is then shared with the group

Meals: B.L.D

Day 12 Sendai

Known as the green city by the sea, this tree lined regional city was founded in the 1600s by Date Masamune. One of Japan's most powerful feudal lords, his pure black regalia is rumoured to be the inspiration behind Darth Vader's armour.

Freechoice: Appreciate the incredible natural scenery of Matsushima Bay from the water or learn of the reconstruction of Ishinomaki, one of the areas that was most seriously affected by the 2011 Tohoku earthquake. Learn the history of Sendai, visiting Date Masamune Mausoleum, Zuihoden, and Sendai Castle Ruins or explore the many buildings dotted throughout the forest at Chusonji Temple including Konjikido Hall that is covered inside and out in gold leaf.

Meals: B.L.D

Day 13 At sea

Enjoy a leisurely day at sea to take advantage of the luxurious on board facilities.

Meals: B.L.D

Day 14 Otaru

Disembark from Scenic Eclipse after breakfast and take away memories of a truly unforgettable cruise.

Meals: B

Day 15 Arrive UK

Welcome home.

The itinerary on this page is a guide only and may be amended for operational reasons. As such Scenic cannot guarantee the cruises will operate unaltered from the itineraries stated above. For full terms and conditions refer to pages 48-51.



Your all-inclusive cruise features:

- Return flights from London Heathrow (regional departures available on request)
- Up to 228 guests on board for a truly intimate experience
- Spacious all Verandah Suites
- Butler service for every guest
- Up to 10 on board dining experiences, from casual to fine dining
- Complimentary beverages all day, every day
- Scenic Discovery excursion
- Your choice of Scenic Freechoice activities
- Exclusive Scenic Enrich experiences
- Entertainment in the state-of-the-art theatre
- All tipping and gratuities

For full itinerary and latest availability and Earlybird offers scan QR code



Voyage Prices & Offers

Voyage D21A

Departure Dates		Jun 30 2023		
Cat. Suite	Deck	Full Fare	Earlybird*	Super Earlybird*
D Verandah	5	£12,580	-	-
DA Deluxe Verandah	5	£13,500	£12,430	£12,430
DB Deluxe Verandah	5	£13,745	£12,655	£11,560
DD Grand Deluxe	5	£14,170	£13,035	£13,035
C Verandah	6	£14,050	£12,925	£12,925
CA Deluxe Verandah	6	£14,295	£13,150	£12,000
CD Grand Deluxe	6	SOLD OUT	SOLD OUT	SOLD OUT
GP Grand Panorama	6	SOLD OUT	-	-
B Verandah	7	£14,660	£13,475	£13,475
BA Deluxe Verandah	7	£14,845	£13,645	£12,440
BD Grand Deluxe	7	£15,515	£14,245	£14,245
A Verandah	8	£15,210	£13,970	£12,730
AA Deluxe Verandah	8	£15,640	£14,360	£14,360
AD Grand Deluxe	8	SOLD OUT	SOLD OUT	SOLD OUT
S Spa	8	£18,755	£17,160	£17,160
P Panorama	8	£26,820	-	-
SA Spa	9	SOLD OUT	SOLD OUT	SOLD OUT
SB Spa	9	£19,120	£17,490	£17,490
OP Owner's Penthouse	9	SOLD OUT	-	-

FOR MORE INFORMATION ON EARLYBIRD OFFERS PLEASE SEE PAGES 16-17

Combinable with the following luxury land journeys:



- 10 Day Secrets of Japan (OAKT) – page 38
- Visit sceniceclipse.com for more information

Terms & Conditions: Prices shown are per person, twin share and include all discounts where applicable. Prices and availability correct as of 09/11/22. For full terms and conditions please refer to back page or visit scenic.co.uk/terms-and-conditions.

°Journey across the Bering Sea: Nome to Otaru

Observation Terrace, Scenic Eclipse

Relax in ultra-luxury

Embark on this relaxation voyage. Setting the benchmark in ultra-luxury cruising, one of the first things you're likely to discover upon joining Scenic Eclipse, is just how much space and freedom you have throughout this ultra-luxury Discovery Yacht. Whether it's within your spacious suite, the dining, lounges, bars and wellness areas. This extends to your onshore discoveries, where small groups venture into the epicentre of each region.

Your wellbeing is at the heart of everything we do – from the cuisines we serve, the world-class and tranquil on board wellness spaces and the onshore excursions designed to invigorate the mind, body and soul. Scenic Eclipse and its sophisticated range of spaces and experiences are designed for you to indulge, relax and unwind while enjoying the voyage of a lifetime.

⌚ 11 Day 📍 Anchorage > Otaru

Day 1

UK > Anchorage, USA

Fly from the UK to Anchorage.

Day 2

Anchorage > Nome

Welcome to Nome, set at the tip of the Seward Peninsula and overlooking the Bering Sea. A world of wonder awaits as you step on board and raise your glass to toast the start of your ultra-luxury cruise.

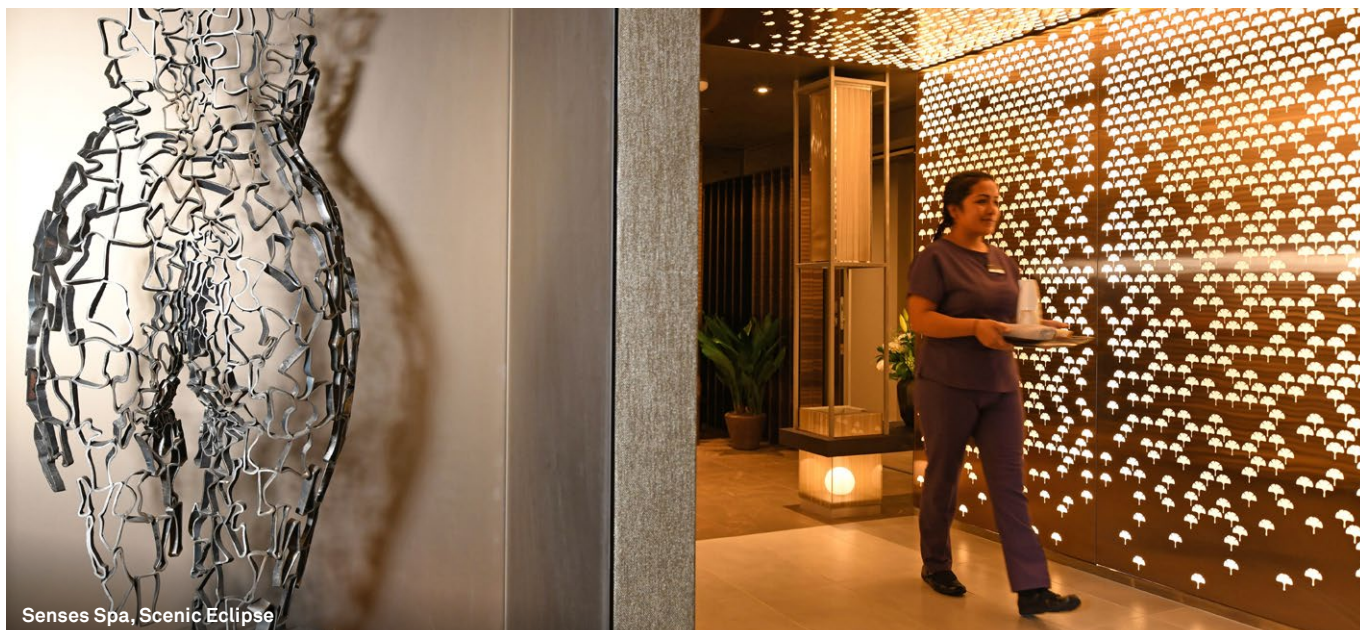
Meals: B.D

Day 3

At sea > Cross International Date Line (Lose one day)

Cruise the Bering Sea and over the International Date Line. Acquaint yourself with the exceptional range of facilities on board your luxurious Discovery Yacht. Choose a class in one of the fitness spaces or relax in one of the therapy lounges in the Spa Sanctuary. Tempt your palate from one of the exceptional dining venues or try a wine tasting.

Meals: B.L.D



Senses Spa, Scenic Eclipse

11 Day Itinerary Anchorage > Otaru



Scenic Eclipse

When cruising in ultra-luxury on board Scenic Eclipse, it's knowing that everything is delivered the Nth Degree, by world-class crew and staff, so you can focus on relaxing in a paradise that only few people will ever see.

Day 4-9

At sea

Scenic Eclipse, The World's First Discovery Yachts, features a sophisticated combination of design and ultra-luxury finishes. Each indoor and outdoor space has been carefully curated with you in mind. Over the next few days, take the time to truly relax and slow down to the rhythm of the sea.

For relaxation and wellbeing, the indulgent Senses Spa awaits. An expansive 550m² gold-leaf emblazoned spa that is truly like nothing else you'll see in any ship around the world. From exquisite cuisine to relaxed dining, take your pick from up to 10 dining experiences that cater to your every taste, preference and mood.

When it's time to relax, take a moment to yourself in your luxuriously-appointed suite. Marvel at wildlife from the observation deck as your butler brings you an afternoon tea. Or simply watch as the world slips by as you relax in your cabana on Deck 10, before taking a dip in the sun deck pool with a refreshing drink in hand. Settle in at any one of the nine

spacious bars and lounges to enjoy your beverage of choice. Relish French champagne at Lumière's Champagne Bar, indulge in an aged whiskey at the Scenic Lounge Bar** or sip on a cocktail in your cabana near the Panorama Bar. In the quiet of the Observation Lounge and Library, you can read a book or play board games as you enjoy a specialty tea or coffee. Take a closer look at landscapes and wildlife as you cruise by, through the Swarovski telescopes.

Meals: B.L.D

Day 10

Otaru, Japan

Disembark Scenic Eclipse after breakfast and transfer to the airport for your overnight flight to the UK.

Meals: B

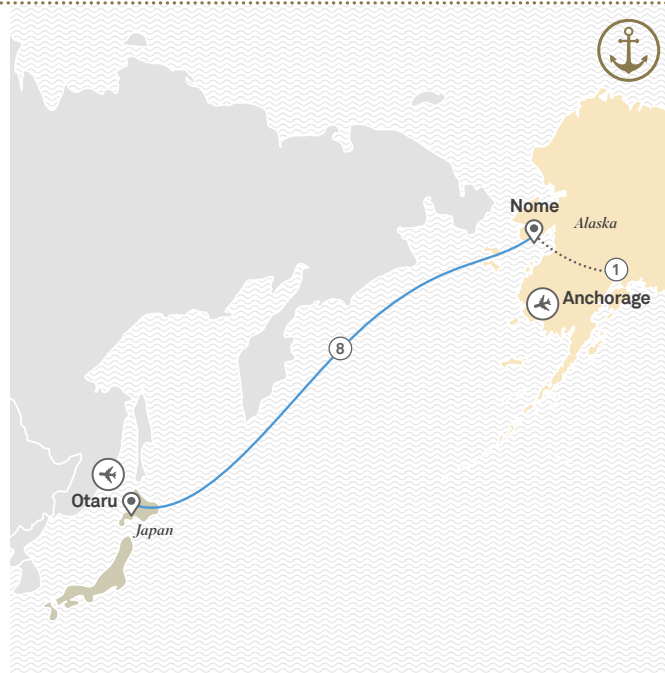
Day 11

Arrive UK

Welcome home.

The itinerary on this page is a guide only and may be amended for operational reasons. As such Scenic cannot guarantee the cruises will operate unaltered from the itineraries stated above. For full terms and conditions refer to pages 48-51

 Cruise  Cruise start/finish  Overnight stay  Included flight



Your all-inclusive cruise features:

- Return flights from London Heathrow (regional departures available on request)
- Up to 228 guests on board for a truly intimate experience
- Spacious all Verandah Suites
- Butler service for every guest
- Up to 10 on board dining experiences, from casual to fine dining
- Complimentary beverages all day, every day
- Entertainment in the state-of-the-art theatre
- All tipping and gratuities

For full itinerary and latest availability and Earlybird offers scan QR code

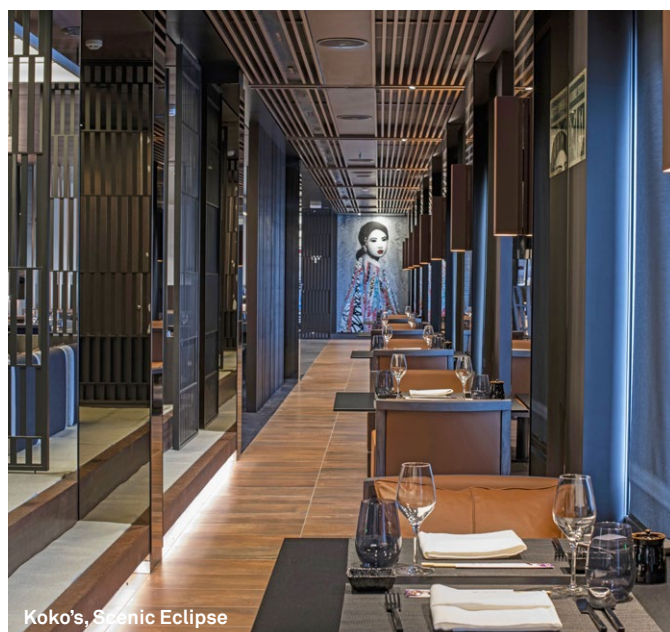


Voyage Prices & Offers

Voyage 501A

Departure Dates		May 26 2023		
Cat. Suite	Deck	Full Fare	Earlybird*	Super Earlybird*
D Verandah	5	£6,695	—	—
DA Deluxe Verandah	5	£7,505	£7,070	£6,635
DB Deluxe Verandah	5	£7,685	£7,235	£6,780
DD Grand Deluxe	5	£8,495	£7,960	£7,425
C Verandah	6	£8,405	£7,880	£7,355
CA Deluxe Verandah	6	£8,675	£8,125	£7,570
CD Grand Deluxe	6	£9,125	£8,530	£7,930
GP Grand Panorama	6	£19,475	—	—
B Verandah	7	£9,125	£8,530	£7,930
BA Deluxe Verandah	7	£9,305	£8,690	£8,075
BD Grand Deluxe	7	£9,845	£9,175	£8,505
A Verandah	8	£9,575	£8,935	£8,290
AA Deluxe Verandah	8	£9,935	£9,260	£8,580
AD Grand Deluxe	8	£10,475	£9,745	£9,010
S Spa	8	£12,455	£11,525	£10,595
P Panorama	8	£19,115	—	—
SA Spa	9	£12,725	£11,770	£10,810
SB Spa	9	£12,815	£11,850	£10,885
OP Owner's Penthouse	9	£22,445	—	—

FOR MORE INFORMATION ON EARLYBIRD OFFERS PLEASE SEE PAGES 16-17



Koko's, Scenic Eclipse

Terms & Conditions: Prices shown are per person, twin share and include all discounts where applicable. Prices and availability correct as of 09/11/22. For full terms and conditions please refer to back page or visit scenic.co.uk/terms-and-conditions.



[^]Flights on board two helicopters and submarine at additional cost, subject to regulatory approval, availability, weight restrictions, medical approval and weather and ice conditions. Helicopters and submarine are unable to operate in Japan.



° THE ALEUTIAN ISLANDS

Journey from Japan along the Pacific Ring of Fire to discover the Aleutian Islands.

This is a chain of 14 volcanic islands and 55 smaller islands rising from the deep, to form a unique and dramatic landscape teeming with rich wildlife and nature.

— With sea-sculpted coastlines, rocky shores, and steep, bold mountains, this pristine region has an energy unlike any other — after all, it is where over two dozen volcanoes that are active or were active in the last 250 years are.

Enjoy Zodiac expeditions with the expert Discovery Team to reach secluded islands and take your exploration further on board Scenic Eclipse's helicopters^ and custom-built submarine^. Raw, powerful and incredibly beautiful, the Aleutian Islands are astonishing.

°Japan & the Aleutian Islands

Dutch Harbor, Aleutian Islands

The Pacific Ring of Fire

Journey from Japan through the Aleutian Islands. A chain of 14 volcanic islands and 55 smaller islands, the Aleutian Islands rise from the deep, and have developed into a chain of unique and dramatic landscapes, replete with fertile soil and ample wildlife.

Traverse its primal beauty on board Scenic Eclipse, exploring the path less travelled with our experienced Captains and Discovery Team. The perfect conditions have been created for both seabirds and cetaceans. With a terrain that ranges from barren tundra lands to dense forests, and sandy beaches to rocky cliff faces, exploring this diverse and changing region is unlike any other.

⌚ 22 Day 📍 Otaru > Anchorage

Day 1

UK > Otaru, Japan

Fly overnight from the UK to Otaru, Japan.

Day 2

Otaru

Welcome to Otaru, enjoy an overnight stay.

Day 3

Otaru

Transfer to Scenic Eclipse where your journey into wonder begins with a warm greeting by the crew as you step on board. Raise your glass this evening and toast the start of your ultra-luxury cruise.

Meals: B.D

Day 4

At sea

Acquaint yourself with the exceptional range of facilities on board your ultra-luxurious Discovery Yacht.

Meals: B.D

Day 5

Nemuro

Set your alarm early this morning and head to the Observation Deck to be among the first to see the sunrise in the land of the rising sun, as we sail into Nemuro. In the Lake Furen area lush green fields meet more than 300 species of wild birds, particularly Sea Eagles and wild Japanese red foxes. See wild deer at Cape Ochiishi.

Meals: B.L.D

Day 6

Kushiro

Welcome to Kushiro, home to Japan's largest marshland, Kushiro Shitsugen, and some of the most pristine wildlife habitats in the country. Keep an eye out for the rare, graceful, and auspicious red-crowned crane. The most populous city in eastern Hokkaido was previously an industrial port and came to life thanks to its harbour and its status as the gateway to the National Parks close by.

Meals: B.L.D

Day 7

At sea

Your palate will be delighted as you explore the extensive range of dining options on board, or relax as a butler serves you your meal in-suite.

Meals: B.L.D

Day 8-9

Cross International Date Line (Gain one day) > At sea

Cruise the Bering Sea and over the International Date Line. Choose a class in one of the fitness spaces or relax in one of the therapy lounges in the Spa Sanctuary. Tempt your palate from one of the exceptional dining venues or try a wine tasting.

Meals: B.L.D

Day 10-15

Aleutian Islands, United States of America 🇺🇸

The Aleutian Islands is a chain of small islands forming a segment of what is known as the Pacific Ring of Fire. One of the world's most beautiful and dramatic regions, journey along the sea-sculpted coastlines, admiring the rocky shores, windswept landscape and steep, bold mountains.

Discovery: Learn from the expert on board Discovery Team, with historians looking back on World War II, to ornithologists teaching you of the multitude of bird species and the stories told by the rocky landscapes with the geologist. Kayak along the islands, join the Discovery Team for landings and explore by foot or discover secret inlets by Zodiac.

Meals: B.L.D

Day 16

Dutch Harbor 🇺🇸

One of the world's largest and most famous fishing ports, Dutch Harbor has a fascinating history. In 1942, Dutch Harbor was attacked by aerial bombardment from the Japanese. Take in the beautiful scenery of this remote and mountainous landscape much loved by tourists, and famed for its hiking, skiing, sportfishing, kayaking and wildlife.

22 Day Itinerary Otaru > Anchorage



Scenic Discovery excursions

Zodiac or kayak excursions are an integral part of your cruise, offering opportunities to get close to some of the most beautiful and dramatic landscapes. Enjoy encounters with wildlife and explore on shore with your expert Discovery Team.

Freechoice: Join a guided hike to a WWII Bunker, passing by numerous WWII ruins, or learn of the cultural history at the Museum of the Aleutians and visit the Aleutian World War II National Historic Area.

Meals: B.L.D

Day 17

Saint Paul Island

St. Paul Island in the Bering Sea lies between USA and Russia, and has a land area of just 100km² and uniquely has just one school, one post office, one bar, one shop and one church. Nature is abundant as the rugged landscape has been shaped by surrounding volcanoes and lava craters. Fauna has flourished with the region becoming well known as a breeding ground for more than 500,000 northern fur seals and millions of seabirds. Spend your day exploring the local museum and church with a local, before visiting the nearby seal colony.

Meals: B.L.D

Day 18

Saint Matthew Island > Hall Island

St. Matthew Island is said to be the most remote place in Alaska. This small, treeless island is protected in a wildlife refuge inhabited by Arctic fox and insular voles. At Hall Island, go ashore with the on board Discovery Team and be immersed in the feeling of seeing ocean in all directions.

Meals: B.L.D

Day 19

At sea

Enjoy your final day at sea and share memories of your experiences with new-found friends

Meals: B.L.D

Day 20

Nome > Anchorage

Your cruise ends this morning in Anchorage. Disembark after breakfast and transfer to the airport for your overnight flight to the UK.

Meals: B

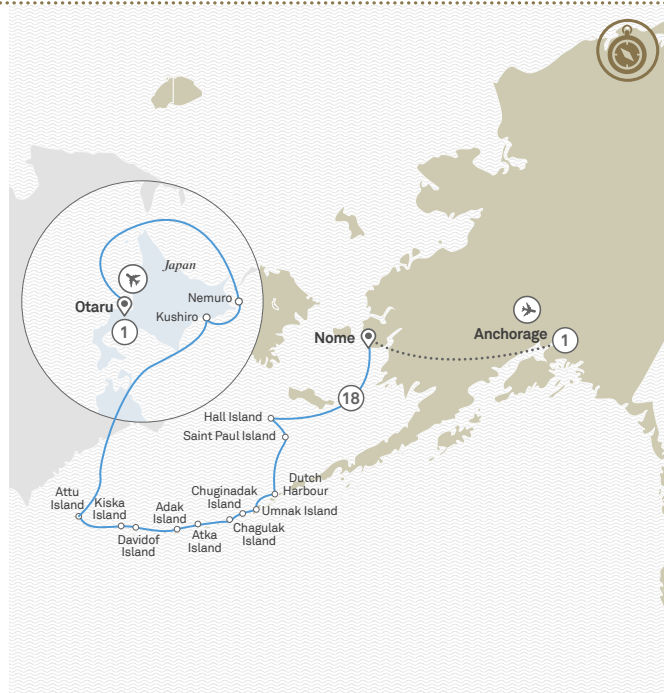
Day 21

Arrive UK



Welcome home.

The itinerary on this page is a guide only and may be amended for operational reasons. As such Scenic cannot guarantee the cruises will operate unaltered from the itineraries stated above. For full terms and conditions refer to pages 48-51.

 Cruise  Cruise start/finish  Overnight stay  Included flight



Your all-inclusive cruise features:

- Return flights from London Heathrow (regional departures available on request)
- Up to 228 guests on board for a truly intimate experience
- Spacious all Verandah Suites
- Butler service for every guest
- Up to 10 on board dining experiences, from casual to fine dining
- Complimentary beverages all day, every day
- Scenic Discovery excursions 
- Your choice of Scenic Freechoice activities 
- Engaging lecture and education program on board
- Internal flights and taxes
- All tipping and gratuities

For full itinerary and latest availability and Earlybird offers scan QR code



Voyage Prices & Offers

Voyage 801U

Departure Dates			July 11 2023		
Cat.	Suite	Deck	Full Fare	Earlybird*	Super Earlybird*
D	Verandah	5	£18,295	—	—
DA	Deluxe Verandah	5	£19,825	£18,315	£16,800
DB	Deluxe Verandah	5	£20,165	£18,620	£17,070
DD	Grand Deluxe	5	£21,695	£19,995	£18,295
C	Verandah	6	£21,525	£19,845	£18,160
CA	Deluxe Verandah	6	£22,035	£20,300	£18,565
CD	Grand Deluxe	6	£22,885	£21,065	£19,245
GP	Grand Panorama	6	£42,435	—	—
B	Verandah	7	£22,885	£21,065	£19,245
BA	Deluxe Verandah	7	£23,225	£21,375	£19,520
BD	Grand Deluxe	7	£24,245	£22,290	£20,335
A	Verandah	8	£23,735	£21,830	£19,925
AA	Deluxe Verandah	8	£24,415	£22,445	£20,470
AD	Grand Deluxe	8	£25,435	£23,360	£21,285
S	Spa	8	£29,175	£26,730	£24,280
P	Panorama	8	£41,755	—	—
SA	Spa	9	£29,685	£27,185	£24,685
SB	Spa	9	£29,855	£27,340	£24,820
OP	Owner's Penthouse	9	£48,045	—	—

FOR MORE INFORMATION ON EARLYBIRD OFFERS PLEASE SEE PAGES 16-17

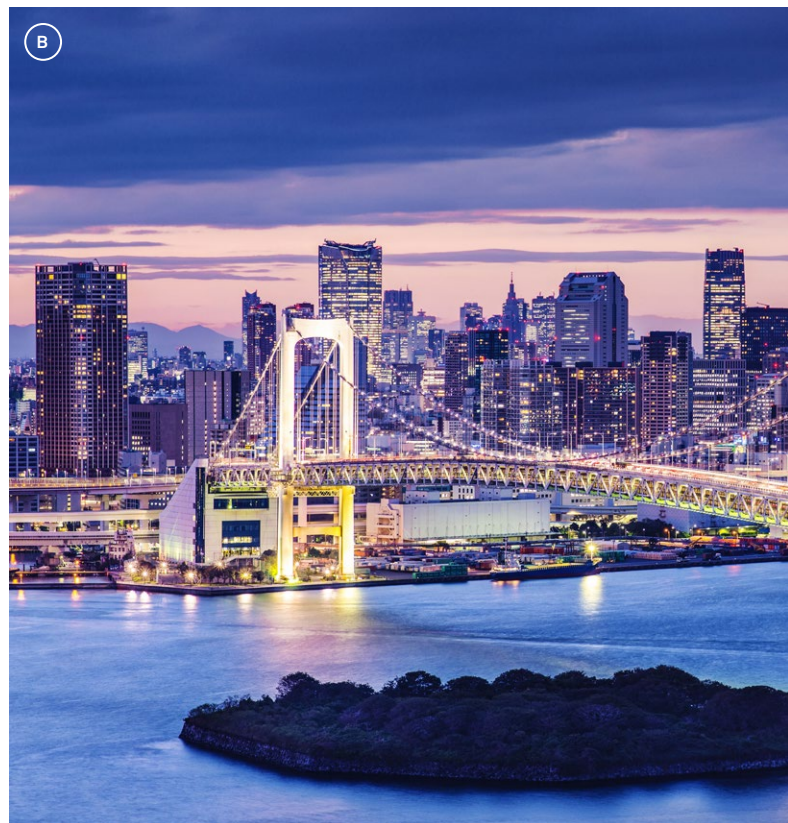
Terms & Conditions: Prices shown are per person, twin share and include all discounts where applicable. Prices and availability correct as of 09/11/22. For full terms and conditions please refer to back page or visit [scenic.co.uk/terms-and-conditions](https://www.scenic.co.uk/terms-and-conditions).



Japan

Luxury Land Journeys

From its ancient Samurai culture to present-day Japanese anime, the Land of the Rising Sun has always had its own unmistakable identity. You'll find that same element of uniqueness in everything you come across in this proud and distinctive country, whether it's glittering skyscrapers or ancient temples, snow-capped peaks or state-of-the-art entertainment complexes.





The essence of modernity

Explore the bright lights of Osaka and Tokyo – the world's most populated city – and marvel at the innovative technologies that distinguish them and Japan's other modern meccas. Marvel at magnificent skyscrapers, travel on bullet trains that are the envy of the world, visit factories that set global standards for innovation and productivity, and retail precincts that offer every modern wonder imaginable.

A place with history and spirit

Discover a land where Samurai are still revered, not just in traditional corners, but in powerful corporations and bustling modern marketplaces. Delight in the simplicity of beautiful temples and serene gardens. Encounter authentic Geishas and Maikos (apprentice Geishas) and learn to master the art of Taiko drumming and handcrafting sushi. You'll get to learn about sumo wrestling

and the Samurai, and bow before ancient shrines. Japan is a land of spirituality and tradition, and you'll have every opportunity to embrace it all.

Japanese traditional dress

Traditionally, Japanese men and women wore the kimono, the style of which has changed little since the Edo period. Still worn on formal occasions and festivals, it is likely you will see both women and men wearing either formal (montsuki) or lightweight summer (yukata) kimono during your stay. Try on a kimono during your Scenic Enrich experience in Kyoto.

- A The art of Samurai
- B Rainbow Bridge, Tokyo
- C Geishas in traditional dress
- D Lake Ashinoko
- E Arashiyama Bamboo Grove, Kyoto



Himeji Castle, Japan

°Secrets of Japan

The Land of Contrasts

Rich in natural beauty, enchanting culture and unique experiences, Japan is a land of contrasts. Discover the captivating neon-lit streets of Tokyo and explore carefully preserved old-world villages. Be welcomed by the gracious local Japanese hospitality and immerse yourself in this fascinating country.

Behind Tokyo's futuristic façade lies a culture steeped in time. Explore neighbourhoods with manga-inspired street fashion or visit a traditional shrine. Tranquil Hakone offers a slice of old-world Japan. Its charming streets and inns are backed by stunning views of the iconic Mt Fuji where you will stay in a hotel complete with a private onsen bath. Explore Japan's cultural centre, Kyoto. Discover teahouses, the captivating Geisha culture and take a rickshaw ride through bamboo forests. Stroll through aromatic local markets, find the perfect Japanese restaurant, spot a Geisha and walk through centuries-old shrines and gardens. Japan, a cultural delight and timeless gem. Prepare to fall in love with tatami mats, sliding paper doors, kimonos and hot spring spas.

⌚ 10 Day Land Journey 📍 Tokyo > Osaka

Day 1 Tokyo

Welcome to Tokyo, Japan's capital and the world's most populous metropolis. Check in to your hotel, your home for the next two nights. With direct access to four subway lines, the hotel was recently rated in the Forbes Travel Guide as Tokyo's exclusive Japanese decor 5-star luxury hotel. Rooms overlook the most picturesque sites in Tokyo, such as the Imperial Palace, the 500-year old Hie Jinja Shrine and beautiful landscaped Japanese gardens. This evening meet for your welcome reception and dinner.

Meals: D

Day 2 Tokyo 🍵

Begin the day with a visit to the Asakusa district, paying your respects at Sensoji, the city's oldest Buddhist temple. After lunch gather your bearings of Tokyo from above as you take in the view from Tokyo Sky Tree. **Freechoice Dining:** Choose from dining at a ninja themed restaurant or culturally immerse yourself in the traditional Japanese evening izakaya bar scene serving Yaki-tori and Kushiyaki with your Tour Director as they show you their favourite places to go.

Meals: B.L.D

Day 3

Tokyo > Hakone

Walk through the beautiful Imperial Palace's East Gardens, part of the inner palace area and the former site of Edo Castle's innermost circles of defence when the Tokugawa shogun ruled Japan from 1603 to 1867. Then in Ginza, dress up in your chefs clothes to make your own sushi lunch with the help of a local chef. Venture into the countryside on your drive to Hakone and study the art works and sculptures at the Hakone Open Air Museum. Check-in to your hotel for the night and relax in your private open air onsen bath on your balcony.

Meals: B.L.D

Day 4

Hakone > Kyoto 🏯

Walk around the hot springs at the summit of the Owakudani geothermal area and admire the stunning scenery during your cable car ride down to your Lake Ashinoko cruise with Mt Fuji as a backdrop. Later, transfer to the Odawara train station to relax in your Green (Business) Class seats on the Shinkansen to the culturally rich city of Kyoto, home to many World Heritage-listed sites. Settle in for your four night Special Stay. Tonight enjoy Italian cuisine at the hotel's FoRni Restaurant.

Meals: B.L.D

Day 5

Kyoto 🍵

Begin the day at the famous Kinkaku-ji or Golden Pavilion. Afterwards, glide through the surreal Arashiyama Bamboo Grove by traditional rickshaw before exploring and enjoying a vegetarian meal at the World Heritage-listed Tenryu-ji Temple. This evening stroll through the Gion area before dinner.

Freechoice Dining: Enjoy the option of dining at Fortune Garden or traditional Kaiseki at Gion Sekiya located in the famous Gion District.

Meals: B.L.D

Day 6

Kyoto 🍵🏯

Freechoice: Revel in the atmosphere of the ancient preservation districts or visit the Silver Pavilion before strolling along part of the famous Philosopher's Walk, an approximately two kilometre long, beautiful stone path walk along a canal through the northern part of Kyoto's Higashiyama district.

Enrich: Partake in a Japanese tea ceremony while dressed in a traditional Japanese kimono, a great photo opportunity.

This afternoon enjoy some free time in Nishiki Market for shopping or relaxation.

10 Day Itinerary Osaka > Tokyo

① Overnight stay  Rail  Land

Enrich: Tonight's dinner will allow you to interact with a Geiko and Maiko who'll host your meal presentation in a nearby traditional Japanese restaurant. It's an excellent opportunity to learn about what is involved in becoming a Geisha and the art of Japanese hospitality.

Meals: B.D

Day 7

Kyoto > Nara

Begin your day with an early visit to Fushimi Inari Shrine, famous for its thousands of vermilion torii gates and its appearance in the film 'Memoirs of a Geisha'. Then continue to Nara, where you'll visit Todaiji Temple, one of the most historically influential temples in Japan and see deer in Nara Park. Later, stop for a sake tasting at a sake museum.

Meals: B.L

Day 8

Kyoto > Himeji > Osaka

Travel by Green Class seats on the Shinkansen to marvel at Himeji Castle, an original and Japan's most spectacular castle, before continuing to Osaka. Enjoy a two night Special Stay in an Executive Room with full club lounge access. This evening catch the Osaka Metro to wander around the lively entertainment area of Dotonbori and Hozenji Yokocho food alley, where you can have the opportunity to choose your own meal this evening from one of the many traditional food stalls.

Meals: B.L

Day 9

Osaka > Asuka

Drive to the birthplace of the Japanese state and cradle of Japanese culture in Asuka, in Nara Prefecture. Wander through the Inabuchi terraced rice paddy fields, the ancient Tobiishi stone bridge, famous in Japanese folklore and visit Ishibutai tumulus, the largest known megalithic structure in Japan.

Enrich: Learn about the history, life and training routine of a sumo wrestler during a private visit to a Sumo Museum in Kehayaza, where Sumo originated. After the welcome ceremony, see a demonstration of Jinku and the wrestlers in action in the dohyo.

Later stop at the timeless village of Tondabayashi to visit a traditional Edo period house and wander around this splendid historical time capsule. Enjoy your Club Floor benefits before reliving your experiences at your farewell dinner.

Meals: B.L.D

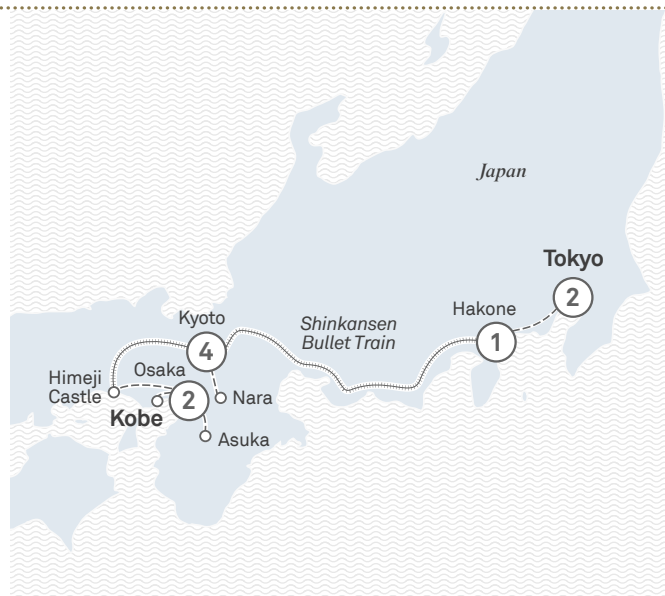
Day 10

Osaka

After a leisurely morning, check out and drive to Kobi to board the luxurious Scenic Eclipse for your cruise to Otaru.

Meals: B

The itinerary on this page is a guide only and may be amended for operational reasons. As such Scenic cannot guarantee the cruises will operate unaltered from the itineraries stated above. For full terms and conditions refer to pages 48-51.






Scenic Enrich experience

Enjoy a private dinner with a Geiko and Maiko in Japan and discover exactly what's involved in becoming a Geisha, an experience that will enrich your understanding and appreciation of their life and culture.



Cable car ride down to Lake Ashinoko

Your luxury escorted journey includes:

- The intimacy of small group land journeys with up to 20 guests
- Exclusive Scenic Enrich experiences 
- Your choice of Scenic Freechoice activities 
- Memorable Scenic Special Stay 
- Fully escorted land journey led by an expert handpicked Tour Director and knowledgeable local guides
- Porterage throughout, plus return airport transfers
- All tipping and gratuities

For full itinerary and latest availability and Earlybird offers scan QR code



Combinable with the following Scenic Eclipse cruises:



- 15 Day Japan: A Journey Through Time (101A) – page 26
- 15 Day The Islands of Japan (201A) – page 28

Visit sceniceclipse.com for more information

Combine cruise and land and save up to 10% with guaranteed earlybird*

Departure Dates

Tour code: OAKT

2023

From

Jul 02#

£8,465

Terms & Conditions: Prices shown are per person, twin share and include all discounts where applicable. Prices and availability correct as of 09/11/22. For full terms and conditions please refer to back page or visit scenic.co.uk/terms-and-conditions.



Scenic Eclipse Discovery Yachts

Truly All-Inclusive Dining



World's
Best Cruise Ship for
Dining

A



Up to 10 Dining Experiences*

Elements

The main restaurant featuring Italian, steak and seafood

Chef's Table @ Elements

An exclusive invitation to private dégustation dining

Koko's

Asian fusion restaurant and sake bar

Sushi @ Koko's

A wonderfully authentic Japanese experience

Night Market @ Koko's

Private dining with an authentic Teppanyaki grill

Lumière

Contemporary French fine dining and Champagne bar

Azure Bar & Café

Relaxed all-day grazing

Yacht Club

Yacht Club grill restaurant and bar, serving breakfast and lunch

In-Suite Dining

A comprehensive 24-hour menu

Scenic Épicure

Culinary masterclasses



B



Dining on board Scenic Eclipse promises to be a sensory delight. With an unrivalled range of up to 10 dining experiences, from casual to fine dining inspired by all four corners of the globe, a multicultural culinary adventure awaits.

There is always something to tempt, delight and savour each guest's tastes. From contemporary French fine dining at Lumière to your favourite fillet of steak cooked to perfection in our elegant Elements main restaurant, or a casual meal in the Azure Bar & Café.



Explore the extensive dining choices on Scenic Eclipse
sceniceclipse.com/dining

Culinary Expertise

Tom Götter, our Director of Food and Beverage, oversees the menu development across all on board dining experiences and manages the Culinary Team which represent 14 nations in the kitchen. Tom has an impressive career in ocean cruising and is excited to share his passion for food and cuisine with you.

A Night Market @ Koko's C Corporate Chef, Tom Götter
 B Chef's Table D Sushi @ Koko's

*Not all dining venues operate in all locations.





Scenic Eclipse Discovery Yachts A Feast for Your Senses



World's
Best Cruise Ship for
Dining

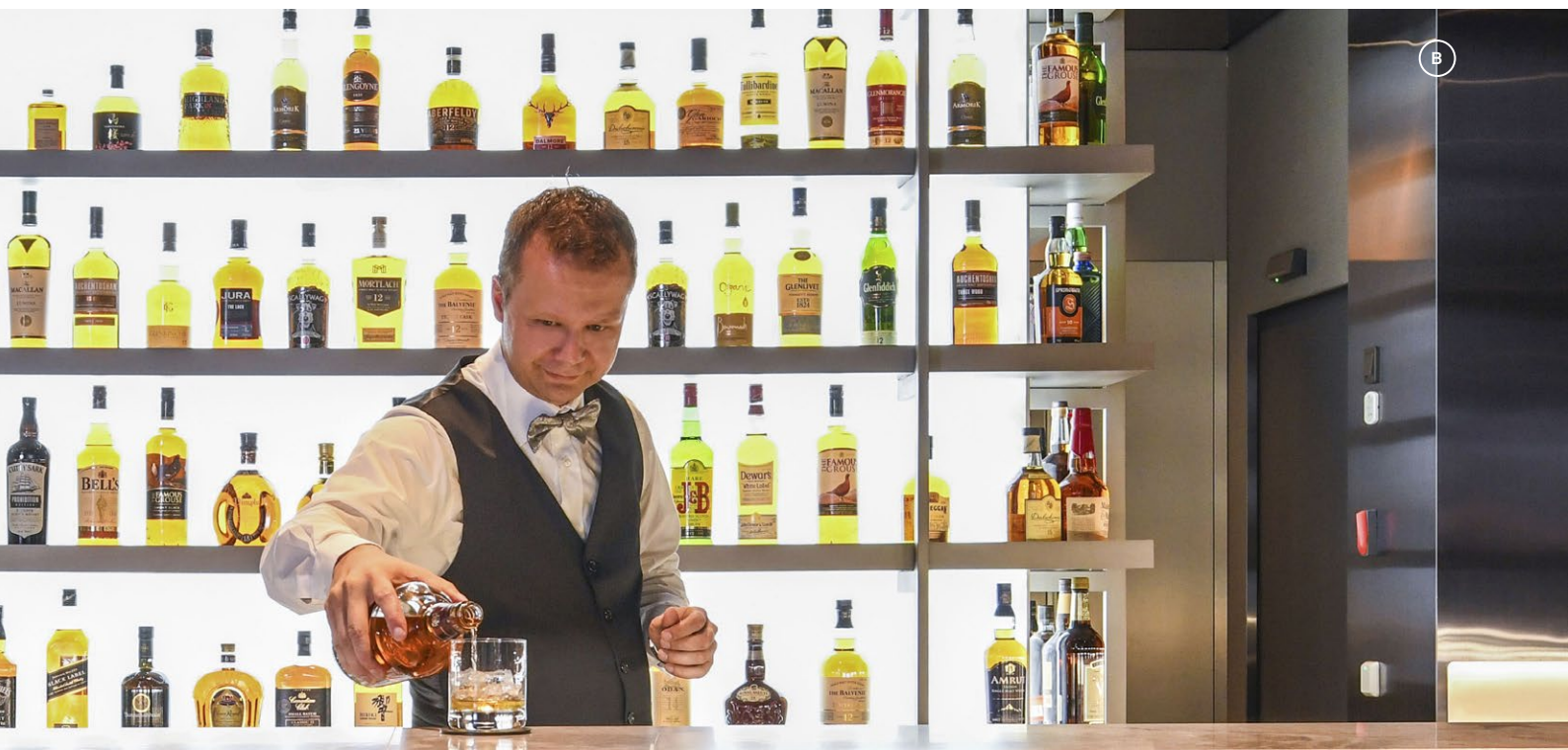


Specialty Dining

With up to 10 dining experiences, you can confidently select your preference to dine when and where the mood strikes. Dine together in the restaurant of your choice or in-suite, after a day of activities, it's up to you.

Small and intimate dining venues on Scenic Eclipse, give you the option of privacy and space at no additional cost. Our private dining experiences include the Night Market @ Koko's, with an authentic teppanyaki grill, open for reservations. Chef's Table, for dégustation dining, is invitation-only, with each experience limited to just eight and ten guests, respectively.

A Lumière
B Scenic Whiskey Bar



Truly All-Inclusive Beverages

- Unlimited complimentary premium beverages*
- Full in-suite mini-bar re-stocked daily
- Still and sparkling water in-suite
- Refillable water bottle for all onshore excursions
- An extensive range of specialty teas and illy coffees

An Unrivalled Selection

Featuring nine spacious bars and lounges, relaxation awaits. Sip a glass of France's finest at Lumière's intimate Champagne Bar, indulge in an aged single malt at the elegant Scenic Lounge Bar, enjoy a cocktail at the Panorama Bar, as you take in the spectacular surrounds, or unwind in the Observation Lounge with a specialty tea or coffee.

Fancy a gin and tonic as you marvel at majestic landscapes from your private verandah, or a rich cabernet sauvignon with dinner? Complimentary beverages*, including your mini-bar, are part of our signature truly all-inclusive promise. This impressive selection of top-shelf spirits includes gin, sake or more than 100 varieties of whiskey, and it's all included all day, every day.

Not all venues operate in all locations. *All drinks on board are included except for a very small number of rare, fine and vintage wines, champagnes and spirits.



Scenic Eclipse Discovery Yachts Luxury Suites



Owner's Penthouse Suites

An enormous 195m²

Redefining luxury, your private retreat features a separate lounge and dining area, a super-size bathroom and private Jacuzzi on the spacious terrace. Extraordinary in every regard, staying in one of only two of these suites is the ultimate indulgence.



Panorama Suites

Ranging in size from 105-110m²

Grandeur and style are taken to a whole new level in our Panorama and Grand Panorama Suites. Overlooking the bow of the yacht and with spacious curved terraces, a separate lounge and dining area and reading alcove, these suites will surpass your expectations.

Scenic Eclipse has set the standard in ultra-luxury cruising with 114 luxurious suites across five decks. Designed as your own indulgent haven, each suite is very spacious and filled with natural light, with floor-to-ceiling sliding doors opening onto your private verandah or terrace.

From the generous 32m² Verandah Suites to the 245m² Two-bedroom Penthouse Suite, the beautiful accommodation features butler service, elegant furnishings, state-of-the-art amenities, separate sleep zone and lounge area, and more to enhance your experience. It's your ultimate retreat after a day of discovery.



Spa Suites

Ranging in size from 46-50m²

With a premier location on the ship, the opulence of our spacious Spa Suites includes a four-poster king-size Scenic Slumber Bed, separate living room and lounge, a private verandah and a signature double-size Philippe Starck-designed spa bath. They're the perfect hideaway.



Verandah Suites

Ranging in size from 32-40m²

All three Verandah Suite categories offer a private retreat where you will be ensconced in all-inclusive luxury. Each suite includes a private verandah, luxury king-size Scenic Slumber Bed, separate lounge area and butler service.



Scenic Eclipse Discovery Yachts Relax, Unwind, Indulge



A Sanctuary of Serenity

An overwhelming sense of tranquillity is felt the moment you arrive at the stunning gold leaf reception of Senses Spa. A feeling of ultimate relaxation that continues throughout the indulgent spaces that make up this on board sanctuary. The symbol of our Senses Spa is the Ginkgo leaf, reflecting the beauty, strength and vitality of the Ginkgo tree that is revered throughout Eastern cultures.

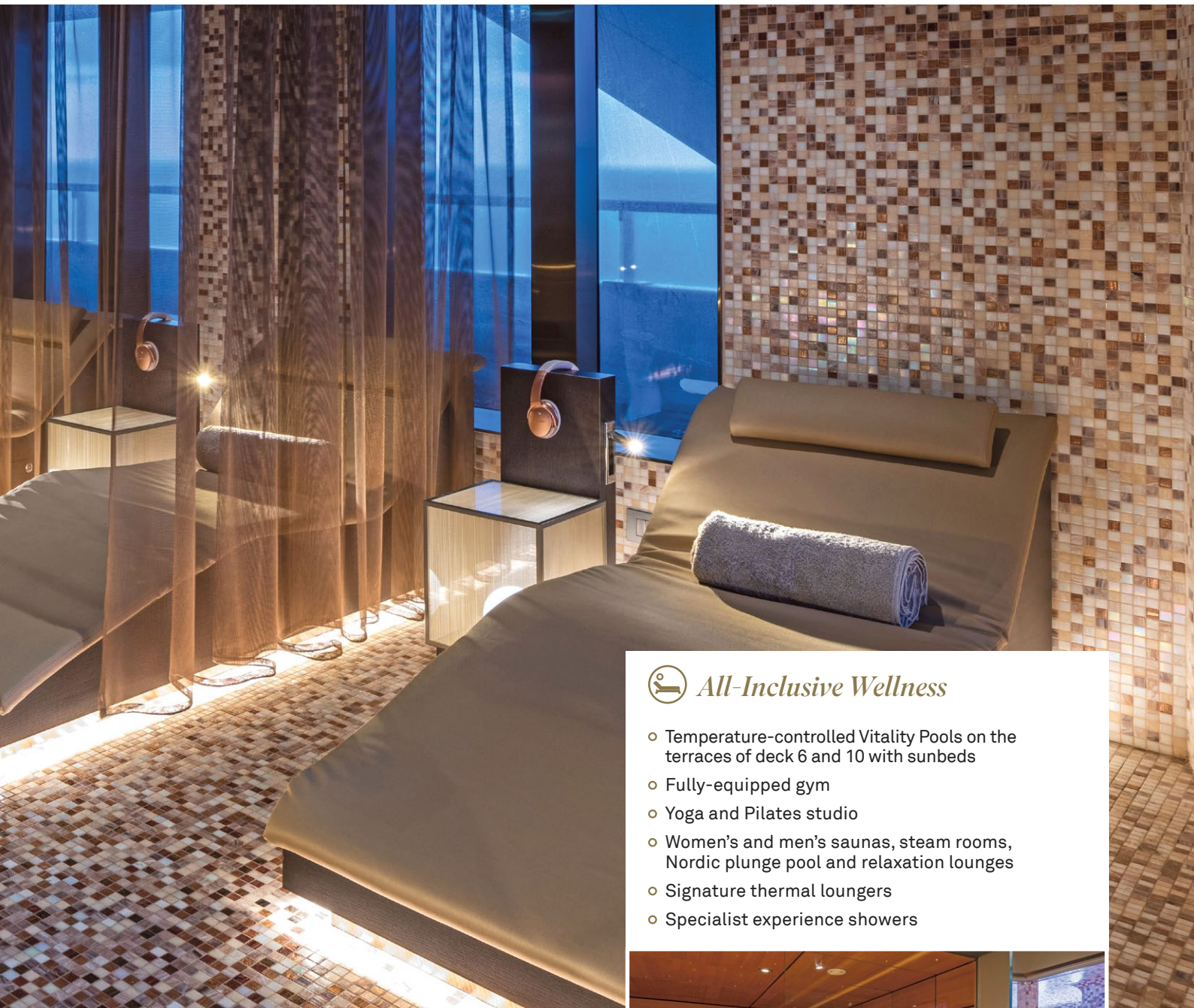
A Relaxation Room B Refreshing showers

C Infrared sauna and steam room

[^]At additional cost.

Scenic Eclipse features an abundance of indulgent spaces for your relaxation and wellbeing. The exclusive Senses Spa is a vast 550m² of pure tranquillity, offering an extensive range of

Scandinavian-inspired indoor and outdoor spa facilities. The Cabanas on Deck 10 are the perfect spot to relax while taking in the magnificent views. All complimentary for you to use.



All-Inclusive Wellness

- Temperature-controlled Vitality Pools on the terraces of deck 6 and 10 with sunbeds
- Fully-equipped gym
- Yoga and Pilates studio
- Women's and men's saunas, steam rooms, Nordic plunge pool and relaxation lounges
- Signature thermal loungers
- Specialist experience showers

Mind, Body & Soul

At Senses Spa you can boost your energy in the vitality lounge, or relax in our tranquil spaces to revitalise after your day of discovery. The unique thermal loungers will soothe your mind while your body is gently heated and purified. Enjoy the separate POWER: Gym and PURE: Yoga and Pilates Studio on Deck 7, complimentary for you to use to help maintain your fitness and wellness, your way, throughout your voyage. Personal, one-to-one Pilates, yoga, meditation and fitness sessions^ are also available with our instructors for expert coaching in health and wellbeing.



Terms & Conditions

General Booking Terms and Conditions

Deposit per person: 10% of cruise element (or cruise and land element when booking a cruise and land journey combination) at time of booking with further 15% deposit of cruise element (or cruise and land element when booking a cruise and land journey combination) 12 months prior to sailing. Earlybird Fares are strictly limited and subject to availability. Prices are per person based on twin share with flights departing London Heathrow and are subject to availability and may change. Single supplement prices on application. Itineraries subject to weather and ice conditions.

Booking conditions

Important: The following terms and conditions together with the general information contained in our journey brochure form the basis of your contract with Scenic Tours (UK) Ltd, 4 Piccadilly Place, Manchester, UK, M1 3BN company number 05770868. Please read them carefully as they set out our respective rights and obligations and in particular note that:

- If for any reason you cancel your holiday, cancellation charges will apply and may be up to 100% of the booking cost. We may also cancel your booking;
- You may make amendments to your booking but there will be a charge for this and we can change your booking where it is necessary for us to do so;
- You should take out travel insurance that is appropriate to your needs;
- We provide financial security as required by The Package Travel and Linked Travel Arrangements Regulations 2018 for package holidays through our membership with ABTA (membership number: Y6328) and for flight inclusive holidays our ATOL membership (number 9294);
- Some of the flights and flight-inclusive holidays on this website are financially protected by the ATOL scheme. But ATOL protection does not apply to all holiday and travel services listed on this website. This website will provide you with information on the protection that applies in the case of each holiday and travel service offered before you make your booking. If you do not receive an ATOL Certificate then the booking will not be ATOL protected. Please see our booking conditions for information, or for more information about financial protection and the ATOL Certificate go to: www.caa.co.uk
- In order for us to process your booking and provide the journey to you, you will need to provide us, and we will need to use your personal information. We will also need to provide your personal information to service providers. By making a booking you give us your consent to use and disclose your personal information in the manner described.

By asking us to confirm your booking, we are entitled to assume that you have had the opportunity to read and have read these booking conditions and agree to them. Except where otherwise stated, these booking conditions only apply to journey arrangements (including pre and post journey accommodation, activities and other services) which you book with us and pay for before departure and which we agree to make, provide or perform (as applicable) as part of our contract with you. All references in these booking conditions to "holiday", "booking", "cruise", "journey" or "arrangements" mean such journey arrangements unless otherwise stated. In these booking conditions, "you" and "your" means all persons named on the booking (including anyone who is added or substituted at a later date) or any of them as the context requires. "We", "us" and "our" means Scenic Tours (UK) Limited.

We are a Member of ABTA. When you book with an ABTA Member you can expect high service standards, fair terms of trading and accurate information. ABTA's strict joining criteria for Members, code of conduct, customer helpline and approved Alternative Dispute Resolution (ADR) scheme to resolve complaints are all there to give you confidence and peace of mind when booking your travel arrangements.

For more information see www.abta.com.

Bookings

1. If you or any member of your party has any medical condition, pregnancy, or disability which may affect your journey or has any special requirements as a result of any medical condition, pregnancy, or disability (including any which affect the booking process), it is very important that you tell us of the condition and of any medical or mobility equipment you will need in writing before you confirm your booking so that we can assist you in considering the suitability of the arrangements and/or making the booking. Given the potentially extreme conditions and remote locations we may visit you must also complete a mandatory full medical questionnaire (to be provided 90 days prior to departure) to enable us to assess the risks involved. This questionnaire must be signed by your medical practitioner between 90 and 60 days prior to the journey departure date and must be returned to us not later than 60 days prior to the journey departure date. Any medical certificate issued earlier than 90 days before the journey departure date will not be accepted and a revised one will be required. Any guest who has not completed and returned their medical certificate will not be cleared for embarkation and their booking will be deemed to have been cancelled by them in which case the cancellation charges will apply detailed below. Some activities either on board the ship or onshore at all ports may be unsuitable for those with reduced mobility. You must also notify us of any changes or deterioration in the disability or medical condition or development of any disability, pregnancy, or medical condition after booking. We must reserve

the right to decline a reservation of any person or, if full details are not given at the time of booking or the condition/disability develops after booking, cancel when we become aware of these details, if we reasonably feel unable to properly accommodate their particular needs. In the event that you require assistance with embarking or disembarking as a result of your reduced mobility or disability, please advise us at the time of booking and in any event no later than 48 hours before the assistance is required. Please also note that assistance is not always available when embarking or disembarking at all ports of call. It is important to note in relation to the Scenic Eclipse that:

- (i) for safety reasons, passengers in wheelchairs cannot be carried on boarding ramps (which may be steep due to water levels) whilst the vessel is tied up or at anchor, or on to motor coaches, tenders, Discovery experiences including but not limited to Zodiacs, kayaks and submarine; and
 - (ii) collapsible walkers may be taken onto tender vessels for transfer to shore for the included touring. Walkers are however unable to be taken on the zodiacs at any time due to space restrictions. The walkers will be stored in the guest's suite – there is no additional storage space on board.
 - (iii) guests must be able to walk up/down stairs in the event of an emergency to reach emergency evacuation points.
 - (iv) motorised scooters cannot be used on board
 - (v) wheelchairs and walkers can be carried in the luggage compartment of motorcoaches subject to space limitations.
 - (vi) embarking and disembarking the tenders, Zodiacs, kayaks and submarine are via a mud room/change room with steps leading to a marina platform and requires the ability to step into and out of these vessels unaided.
 - (vii) elevators may not access all decks and cabins and bathrooms may have significant thresholds and cabin doors which limit access.
2. The operation of all journeys is conditional on us securing the minimum number of bookings. Where sufficient numbers cannot be achieved, we may cancel or change a scheduled journey. Please also see clauses 13 to 16. We will notify you no less than 30 days prior to the departure date of the journey if we have to cancel or significantly change a journey due to lack of numbers.
3. If you have any special requests (including dietary requirements) you must notify us in writing at the time of booking. Please note special requests cannot be guaranteed. Failure to meet any special request will not be a breach of contract by us. Confirmation that a special request has been noted or passed on to the supplier of any service(s) or the inclusion of the special request on your confirmation invoice or any other documentation is not confirmation that the request will be met. Unless and until specifically confirmed, all special requests are subject to availability. For your own protection, you should obtain confirmation in writing that a special request will be complied (where it is possible to give this) where it is important to you. We cannot accept any conditional bookings, i.e. any booking which is specified to be conditional on the fulfilment of a particular request. All such bookings will be treated as "standard" bookings subject to the above provisions on special requests.

Payment

4. To make a booking, you are required to pay a 10% deposit of the cruise element (or cruise and land element when booking a cruise and land journey combination) with a second 15% deposit of the cruise element (or cruise and land element when booking a cruise and land journey combination) due 12 months prior to departure. Early bird fares have limited availability
5. The balance of the journey price must be received by us no less than 120 days prior to the start of your journey. If we do not receive all payments due (including any surcharge where applicable) in full and on time, we are entitled to assume that you wish to cancel your booking. In this case, we will be entitled to keep all deposits paid or due at that date. If we do not cancel straight away because you have promised to make payment, you must pay the cancellation charges shown in these terms and conditions depending on the date we reasonably treat your booking as cancelled.
6. Except for flight inclusive bookings, all monies you pay to one of our authorised travel agents for your holiday with us will be held by the agent on your behalf until a contract between us comes into existence. After that point, your agent will hold the monies on our behalf until they are paid to us. For flight inclusive bookings, all monies paid to any authorised travel agent of ours for your holiday with us will be held on behalf of and for the benefit of the Trustees of the Air Travel Trust subject to the travel agent's obligation to pay such monies to us in accordance with our trading terms unless we fail. In the unlikely event of our financial failure, all monies then held by the travel agent or subsequently paid by you to the travel agent will be held by the agent on behalf of and for the benefit of the Trustees of the Air Travel Trust without any obligation on the agent to pay such monies to us.

Credit Card Payments

7. There is no charge for credit or debit card payment.

Your contract

8. Subject to availability we will confirm your booking by issuing our confirmation invoice. This invoice will be sent to the first named person on the booking ("lead name") or your travel agent. Please check this invoice carefully as soon as you receive it. Contact us immediately if any information on the confirmation or any other document appears to be incorrect or incomplete as it may not be

possible to make changes later. We cannot accept any liability if not notified of any inaccuracy in any document within 7 days of our sending it out. We will do our best to rectify any mistake notified to us outside these time limits but you must meet any costs involved in doing so.

9. A binding contract between you and us comes into existence when we issue our confirmation invoice. We both agree that English law (and no other) will apply to your contract and to any dispute, claim or other matter of any description which arises between us ("claim") (except as set out below). We both also agree that any claim (and whether or not involving any personal injury) must be dealt with under the ABTA Alternative Dispute Resolution Scheme ("ADR") (if the scheme is available for the claim in question and you wish to use it – see the clause 37) or by the Courts of England and Wales only unless, in the case of court proceedings, you live in Scotland or Northern Ireland. In this case, proceedings must either be brought in the courts of your home country or those of England and Wales. If proceedings are brought in Scotland or Northern Ireland, you may choose to have your contract and any claim or other matter of any description which arises between us governed by the law of Scotland/Northern Ireland as applicable (but if you do not so choose, English law will apply).

What are your obligations?

10. (a) You must follow the Captain, Discovery Team Leader, and Tour Director's instructions at all times. You acknowledge that failure to do so may result in your withdrawal from the journey. (b) We expect all clients to have consideration for other people. If in our reasonable opinion, or in the reasonable opinion of any other person in authority, you behave in such a way so as to cause or be likely to cause danger, upset or distress to yourself or any third party or damage to property we are entitled, without prior notice, to terminate the journey of the person(s) concerned. We will not be liable to you for any loss, cost or damage resulting from your withdrawal. If you are withdrawn from the journey, you must make your own return travel arrangements at your own expense.

Journey price

11. The journey price is based on the cruise cabin category as indicated on each journey page. Upgrades to other cabin types may be available at additional cost. Please note that individual cabin number requests are a request only and cannot be guaranteed. Please note, changes and errors occasionally occur. You must check the price of your chosen holiday at the time of booking. We reserve the right to make changes to and correct errors in advertised prices and information at any time before your holiday is confirmed. We will advise you of any error of which we are aware and of the then applicable price at the time of booking.

12. Once your journey price has been confirmed at the time of booking, then subject to the correction of errors, it will only be increased or decreased in the following circumstances. A surcharge or refund (as applicable) will be payable, subject to the conditions set out below, in the event of any change in our transportation costs or in dues, taxes, fuel or fees payable for services such as landing taxes or embarkation or disembarkation fees at ports or airports increase or decrease or in the exchange rates which have been used to calculate your journey price. Even in the circumstances set out in above, only if the amount of the increase in our costs exceeds 2% of your journey price (excluding insurance premiums and any amendment fee) will we levy a surcharge.

If any surcharge is greater than 8% of your journey price (excluding insurance premiums and any amendment fee), you will be entitled to cancel your booking and receive a full refund of all monies you have paid to us (except for any amendment fee) or alternatively purchase another journey from us – see clause 14. You have 14 days from the issue date printed on the surcharge invoice to tell us if you wish to cancel or purchase another journey where applicable. Otherwise, we are entitled to assume that you do not wish to do so and will pay the surcharge. Any surcharge must be paid with the balance of the journey price or within 14 days of the issue date printed on the surcharge invoice, whichever is the later. Please note that travel arrangements are not always purchased in local currency and some apparent changes have no impact on the journey price due to contractual and other protection in place. A refund will only be payable if the decrease in our costs exceeds 2% as set out above. Where a refund is due, we will pay you the full amount of the decrease in our costs. No surcharge will be levied within 20 days of departure. No refund will be payable if any decrease in our costs occurs during this period either.

Variation or cancellation by us

13. We start planning the journeys we offer many months in advance.

Occasionally, we have to make changes to and correct errors in the details of advertised journeys both before and after bookings have been confirmed and cancel confirmed bookings. Whilst we always endeavour to avoid changes and cancellations, we must reserve the right to do so. Due to the nature of our itineraries, which are dependent on the safe navigation of national and international waterways over which we have no control, it is therefore not always possible for our vessels to sail or call at all ports as planned or foresee when this may occur. Unfortunately, this is an inherent risk in sailing which you must accept. The captains of all the vessels we use retain the ultimate right to deviate from or change any particular itinerary where they believe it necessary to so, for example in the interests of the health and safety of passengers.

14. Most changes made to a confirmed journey are minor. Examples

of what we both agree to be minor changes are changes of vessels to one of the same class for the whole or part of your journey, changes to vehicles used for transfers and excursions, changes to planned excursions, changes to hotel accommodation to that of an equivalent standard including the substitution of accommodation to on-board our vessels or vice versa, changes to berthing or dock location, changes to sailing times, and the substitution and/or removal of ports of call, or the replacement of sailing with the use of motor coaches. Occasionally, we have to make a significant change to or cancel a confirmed journey and we must reserve the right to do so. A significant change is a change made before departure which, taking account of the information you give us at the time of booking or which we can reasonably be expected to know as a tour operator, we can reasonably expect to have a significant effect on your journey. If we have to make a significant change or cancel, we will tell you as soon as possible. If there is time to do so before departure, you will be offered the choice of the following options:- (a) (for significant changes) accepting the changed arrangements or (b) purchasing alternative arrangements from us, of a similar standard to those booked if available. We will offer you at least one alternative holiday of equivalent or higher standard for which you will not be asked to pay any more than the price of the original holiday. If this holiday is in fact cheaper than the original one, we will refund the price difference. If you do not wish to accept the holiday we specifically offer you, you may choose any of our other available holidays. You must pay the applicable price of any such holiday. This will mean your paying more if it is more expensive or receiving a refund if it is cheaper or (c) cancelling or accepting the cancellation and receiving a full refund of all monies you have paid to us. Please note, the above options are not available where any change made is a minor one. A change of flight time of less than 12 hours, airline (except as specified in clauses 42 to 44 "Flights"), type of aircraft (if advised) or destination airport will all be treated as minor changes.

15. If we have to make a significant change to or cancel a confirmed journey, we will in addition to the options set out in clause 14 pay you compensation depending on the circumstances and when the significant change or cancellation is notified to you subject to the following exceptions. Compensation will not be payable and no liability beyond offering the options set out in clause 14 can be accepted where (a) we are forced to make a change or cancel as a result of unusual and unforeseeable circumstances beyond our control, the consequences of which we could not have avoided even with all due care or (b) we have to cancel because the minimum number of bookings necessary for us to operate your journey has not been reached – see clause 2. No compensation will be payable and the options set out in clause 14 will not be available if we have to cancel as a result of your failure to comply with any requirement of these terms and conditions entitling us to cancel (such as paying on time) or where a change is a minor one.

16. Very rarely, we may be forced by Force Majeure (see clause 28) to change or terminate your journey after departure but before the scheduled end of your time away. This is extremely unlikely but if this situation does occur, we will be unable to make any refunds (unless we obtain any refunds from our suppliers which we do not use to pay for alternative services), pay you any compensation or meet any costs or expenses you incur as a result.

Amendment or cancellation by you

17. If any member of your party is prevented from travelling, the person(s) concerned may transfer their place to someone else (introduced by you) providing we are notified not less than 90 days before departure. Where a transfer to a person of your choice can be made, all costs and charges incurred by us and/or incurred or imposed by any of our suppliers as a result together with an amendment fee of £50 per person must be paid before the transfer can be effected. Any overdue balance payment must also be received. For flight inclusive bookings, you must pay the charges levied by the airline concerned. As most airlines do not permit name changes after tickets have been issued for any reason, these charges are likely to be the full cost of the flight.

18. If you wish to make any amendments to your confirmed booking you must notify us in writing as soon as possible. It may not always be possible to make such amendments. Where we can, an amendment fee of £50 per person per booking will be payable together with any costs incurred by ourselves and any costs or charges incurred or imposed by any of our suppliers. A change of journey dates will normally be treated as a cancellation of the original booking and rebooking in which case cancellation charges will apply. Changes may result in the recalculation of the journey price where, for example, the basis on which the price of the original journey was calculated has changed.

19. You may cancel your booking by notice to us in writing and payment of the applicable cancellation fee as shown below. Cancellation notifications are not effective until received by us in writing (if received by us on a weekend day or public holiday the notification will be treated as having been received by us on the next working day).

The following cancellation fees apply to each person(s) cancelling and where shown as a percentage are based on the total cost of the arrangements which are being cancelled excluding any insurance premiums, amendment fee or previously incurred cancellation charges which are all non-refundable in the event of your cancellation:

Cancellation Fees

Period before your journey commences within which written notification of cancellation is received by us

Cancellation period	Fee per person
120 days and over	Loss of Deposits
119 to 91 days	50% of journey price
90 days or less	100% of journey price

Depending on the reason for cancellation, you may be able to reclaim these cancellation charges (less any applicable excess) under the terms of your insurance policy. Claims must be made directly to the insurance company concerned.

Where any cancellation reduces the number of full paying party members below the number on which the price, number of free places and/or any concessions agreed for your booking were based, we will recalculate these items and re-invoice you accordingly.

Our liability

20. We will ensure that the journey arrangements we have agreed to make, perform or provide as applicable as part of our contract with you are made, performed or provided with reasonable skill and care. This means that, subject to these terms and conditions, we will accept responsibility if, for example, you suffer death or personal injury or your contracted journey arrangements are not provided as promised or prove deficient as a result of the failure of us, our employees, agents or suppliers to use reasonable skill and care in making, performing or providing, as applicable, your contracted journey arrangements. Please note, it is your responsibility to show that reasonable skill and care has not been used if you wish to make a claim against us. In addition, we will only be responsible for what our employees, agents and suppliers do or do not do if they were at the time acting within the course of their employment (for employees) or carrying out work we had asked them to do (for agents and suppliers).

21. We will not be responsible for any injury, illness, death, loss (including loss of enjoyment or possessions), damage, expense, cost or other sum or claim of any description whatsoever which results from any of the following: -

- the act(s) and/or omission(s) of the person(s) affected or any member(s) of their party or
- the act(s) and/or omission(s) of a third party not connected with the provision of your journey and which were unforeseeable/unavoidable or
- Force Majeure as defined at clause 28 below.

22. We cannot accept responsibility for any services which do not form part of our contract with you. This includes, for example, any additional services or facilities which any hotel or other supplier agrees to provide for you where the services or facilities are not advertised in our journey brochure as part of your journey and we have not agreed to arrange them as part of our contract and any excursion or other services you purchase during your journey. Where any such excursion or services are purchased through or with our assistance, please note that we act only as booking agent. Your contract will be with the operator or provider of the excursion or services in question. We have no liability in relation to the same. In addition, regardless of any wording used by us on our website, in any of our brochures or elsewhere, we only promise to use reasonable skill and care as set out above and we do not have any greater or different liability to you.

23. The promises we make to you about the services we have agreed to provide or arrange as part of our contract and the laws and regulations of the country in which your claim or complaint occurred will be used as the basis for deciding whether the journey arrangements in question had been properly provided. If the particular arrangements which gave rise to the claim or complaint complied with the then applicable local laws and regulations, the services will be treated as having been properly performed or provided. This will be the case even if the arrangements did not comply with the laws and regulations of the UK which would have applied had those arrangements been provided in the UK. The exception to this is where the claim or complaint concerns the absence of a safety feature which might lead a reasonable journey participant to refuse to take the journey in question. Please note, however, our obligation is to exercise reasonable skill and care as referred to in clause 20. We do not make any representation or commitment that all services will comply with applicable local laws and regulations and failure to comply does not automatically mean we have not exercised reasonable skill and care.

24. As set out in these booking conditions, we limit the maximum amount we may have to pay you for any claims you may make against us. Where we are found liable for loss of and/or damage to any luggage or personal possessions (including money), the maximum amount we will have to pay you is £1,000 per person affected unless a different limitation applies to your claim under this clause or clause 25 below. For all other claims which do not involve death or personal injury, if we are found liable to you on any basis the maximum amount we will have to pay you is twice the price (excluding insurance premiums and amendment fees) paid by or on behalf of the person(s) affected in total unless a lower limitation applies to your claim under clause 25 below. This maximum amount will only be payable where everything has gone wrong and you have not received any benefit at all from your journey.

25. Where any claim or part of a claim (including those involving death or personal injury) concerns or is based on any travel arrangements (including the process of getting on and/or off the transport concerned) provided by any air, sea or rail carrier to which any international convention or EU regulation applies, the

maximum amount of compensation we will have to pay you will be limited. The most we will have to pay you for that claim or that part of a claim if found liable to you on any basis is the most the carrier concerned would have to pay under the international convention or regulation which applies to the travel arrangements in question (for example, the Warsaw Convention as amended or unamended and the Montreal Convention for international travel by air and/or for airlines with an operating licence granted by an EU country, the EC Regulation on Air Carrier Liability No 889/2002 for national and international travel by air, the Athens Convention for international travel by sea (as amended by the 2002 Protocol where applicable) and COTIF, the Convention on International Travel by Rail). Please note: where a carrier or hotelier would not be obliged to make any payment to you under and in accordance with the applicable international convention or regulation in respect of a claim or part of a claim, we similarly are not obliged to make a payment to you for that claim or part of the claim. When making any payment, we are entitled to deduct any money which you have received or are entitled to receive from the carrier for the claim in question. Copies of the applicable international conventions and regulations are available from us on request.

26. Please note, we cannot accept any liability for any damage, loss, expense or other sum(s) of any description (a) which on the basis of the information given to us by you concerning your booking prior to our accepting it, we could not have foreseen you would suffer or incur if we breached our contract with you or (b) which did not result from any breach of contract or other fault by ourselves or our employees or, where we are responsible for them, our suppliers. Additionally, we cannot accept liability for any business losses including self-employed loss of earnings.

Suppliers

27. Many of the services which make up your journey are provided by independent suppliers. Those suppliers provide these services in accordance with their own terms and conditions. Some of these terms and conditions may limit or exclude the supplier's liability to you, usually in accordance with applicable international conventions (see clause 25). Copies of the relevant parts of these terms and conditions and of the international conventions are available on request from ourselves or the supplier concerned.

Force Majeure

28. Except where otherwise expressly stated in these terms and conditions we regret we cannot accept liability or pay any compensation where the performance or prompt performance of our obligations under our contract with you is prevented or affected by or you otherwise suffer any damage, loss or expense of any nature as a result of Force Majeure. Force Majeure means any event which we or the supplier of the service(s) in question could not, even with all due care, foresee or avoid. Such events are likely to include (whether actual or threatened) an act of God, war, terrorism, fire, flood or any other extreme weather conditions exceptional water levels, lock damage, loss of power, epidemics or pandemics, industrial disputes, slow-downs or other strike activities, political unrest, riots or civil disturbances, prohibitions or acts of Federal, State, Territory, local government, quasi-government bodies or other authorities (including, in each case, their duly constituted or appointed agents), inability to obtain the necessary licence of consent and delays caused by sub-contractors, suppliers or other third parties (including telecommunications carriers), material shortages, any border closures by any country or the UK Government, or other disruptions to the Journey beyond our control.

29. You acknowledge and accept that there are inherent risks associated with our journeys for example events of Force Majeure, hazards of travelling in undeveloped areas, travel by boat, train, automobile, submersible, helicopter, aircraft or other means of transportation particularly in underdeveloped countries or more remote locations such as the Antarctica, South Georgia and the Arctic & Fjords.

30. You must take out adequate and appropriate travel insurance to cover as a minimum cancellation by you, loss of luggage, early return following death of a relative, and emergency repatriation (from remote ocean locations) in the event of accident or illness.

31. Please read your policy details carefully and take them with you on your journey. It is your responsibility to ensure that the insurance cover you purchase is suitable and adequate for your particular needs.

Itinerary changes and travel advice

32. During local or national holidays, certain facilities such as museums and restaurants, sightseeing tours and shopping may be limited or not available. Alternatives will be offered if possible.

33. The Foreign and Commonwealth Office may have issued information about your journey destination. You are advised to check this information on the internet at www.gov.uk/foreign-travel-advice.

Smoking

34. Smoking is limited to designated smoking areas on Scenic Eclipse (and any other vessels), and is not permitted in suites or on verandahs and terraces.

(a) You acknowledge that we may restrict smoking to specific times and locations during Your Cruise for the comfort of all passengers. (b) Smoking is not permitted on coaches/transfer vehicles, discovery vessels, or such other places as nominated by us from time to time.

Baggage allowance

35. You are entitled to carry one suitcase per person with the total sum of its length, width and height not exceeding 76 x 53 x 28cm/30 x 21 x 11in (62 inches) and weight 23kg (50 lbs). Personal

Terms & Conditions

and valuable items such as make-up, cameras, medication, passport, money/credit cards etc. should be carried in a travel bag or on your person. You must ensure that luggage meets the weight requirements as overweight or oversize items will not be carried. Some carriers may impose a small surcharge per day for a second suitcase per person. Excess baggage is always at your cost.

Young travellers

36. Travellers who are less than 18 years old on the departure date must be accompanied by and share a cabin/room with an adult aged 18 or over. Children under the age of 12 years are not encouraged and are accepted or rejected at our sole discretion.

Complaints, Alternative Dispute Resolution, and Damage

37. If a problem occurs during your journey, you must advise our representative immediately so that steps can be taken to resolve the matter and you can continue to enjoy the remainder of your journey. You must also advise the supplier concerned. Any verbal notification must be put in writing and given to our representative/agent and the supplier as soon as possible. If we do not have or you cannot contact our local representative or agent and any complaint or problem is not resolved to your satisfaction by the supplier, you must contact us in the UK using the contact details we have provided you with during your holiday, giving us full details and a contact number. Until we know about a complaint or problem, we cannot begin to resolve it. Most problems can be dealt with quickly. If you remain dissatisfied, any complaint must be made either by telephone or in writing to us giving full details within 30 days of the end of the journey. If you fail to follow this procedure, your right to claim compensation you may otherwise have been entitled to may be affected or even lost as a result.

Only the lead name should write to us. Disputes arising out of, or in connection with your booking which cannot be amicably settled may be referred to ABTA's ADR (Alternative Dispute Resolution) Scheme. The scheme provides for a simple and inexpensive method of resolving disputes and, where appropriate, arbitration on documents alone with restricted liability on the customer in respect of costs. Full details will be provided on request or can be obtained from the ABTA website (www.abta.com). The arbitration scheme does not apply to claims for an amount greater than £5,000 per person. There is also a limit of £25,000 per booking. Neither does it apply to claims which are solely in respect of physical injury or illness or their consequences. The scheme can however deal with compensation claims which include an element of minor injury or illness subject to a limit of £1,500 on the amount the arbitrator can award per person in respect of this element. Your application for arbitration and other required documents must be received by ABTA within 18 months of your return from the holiday. Outside this time limit arbitration under the scheme may still be available if we agree, although the ABTA Code does not require such agreement. For injury and illness claims, you can request the ABTA mediation procedure and we have the option to agree to this. Where we act as agent, please bear in mind that your contract is with the supplier of the arrangements concerned. Unless the supplier is also a member of ABTA, only disputes relating to our actions as agent can be dealt with by the arbitration scheme or mediation procedure and not complaints about the arrangements themselves or the acts/omissions of the supplier.

38. When you book with us, you accept responsibility for any damage or loss caused by you or any member of your party. Full payment for any such damage or loss (reasonably estimated if not precisely known) must be made direct to the accommodation owner or manager or other supplier or to us as soon as possible. If the actual cost of the loss or damage exceeds the amount paid where estimated, you must pay the difference once known. If the actual cost is less than the amount paid, the difference will be refunded. You will also be responsible for meeting any claims subsequently made against us and all costs incurred by us (including our own and the other party's full legal costs) as a result of your actions. You should ensure you have appropriate travel insurance to protect you if this situation arises.

Included in your fare

39. All airfares/rail travel from the UK (unless specified at the time of booking, e.g. selected special offers), coach travel, all cruise travel, services of a Cruise Director (if applicable), airport transfers, port charges, meals, standard drinks, accommodation, sightseeing and admissions and other services as expressly indicated in the itinerary, all gratuities and tipping on land journeys and cruises except as set out below.

NOT included in your fare

40. Gratuities and tips to any staff on cruise ships not operated by us (unless otherwise expressly advised), meals not specified in the itinerary, selected drinks, spa and beauty treatments, hairdressers, medical services, laundry, passport fees, expenses of a personal nature, travel between train stations, helicopter, submarine, scuba diving, and any other items which are not expressly included in the cost of your journey.

Discovery Experiences can only be booked whilst on-board including Zodiac, kayak, helicopter and submarine are at additional costs.

Changes to flight schedules may require additional overnight accommodation at either commencement or completion of journey which is at your own expense. For the avoidance of doubt hotel accommodation is not provided on an all-inclusive basis.

Airfare conditions

41. Air travel is based on a specific class and is subject to availability at time of booking. If booking a promotional cruise, all inclusions and conditions may differ. Please check promotional booking conditions. Full details and conditions may be obtained from us. Changes to original tickets may incur amendment or cancellation fees and are subject to availability. Please see clauses 17 and 18 above.

Flights

42. In accordance with the UK's Retained EU Legislation on EU Directive (EC) No 2111/2005, we are required to bring to your attention the existence of a list which contains details of air carriers that are subject to an operating ban within the UK. The Community list is available for inspection at <https://info.caa.co.uk/uk-regulations/>. We are also required to advise you of the carrier(s) (or, if the carrier(s) is not known, the likely carrier(s)) that will operate your flight(s) at the time of booking. Where we are only able to inform you of the likely carrier(s) at the time of booking, we shall inform you of the identity of the actual carrier(s) as soon as we become aware of this. Any change to the operating carrier(s) after your booking has been confirmed will be notified to you as soon as possible. If the carrier with whom you have a confirmed reservation becomes subject to an operating ban as above as a result of which we/the carrier are unable to offer you a suitable alternative the provisions of clauses 14 to 16 will apply. Any change in the identity of the carrier, flight timings, and/or aircraft type (if advised) will not entitle you to cancel or change to other arrangements without paying our normal charges except where specified in these conditions.

43. If you suffer a delay to your outbound travel arrangements, we will do our best to assist you make the start of your journey or, if this cannot be achieved, join it as soon as possible any costs we incur in making any alternative arrangements in this situation will be your responsibility. In the event of a flight delay, the airline concerned may provide refreshments and/or other assistance depending on factors such as the length of the delay, time of day and number of passengers affected. We cannot accept liability for any delay which is due to any of the reasons set out in clause 21 (which includes the behaviour of any passenger(s) on the flight who, for example, fails to check in or board on time).

44. If your flight is cancelled or delayed, your flight ticket is downgraded or boarding is denied by your airline, depending on the circumstances, the airline may be required to pay you compensation, refund the cost of your flight and/or provide you with accommodation and/or refreshments under EC Regulation No 261/2004 – the Denied Boarding Regulations 2004. Where applicable, you must pursue the airline for the compensation or other payment due to you. All sums you receive or are entitled to receive from the airline concerned by virtue of these Regulations represent the full amount of your entitlement to compensation or any other payment arising from such cancellation, delay, downgrading or denied boarding. This includes any disappointment, distress, inconvenience or effect on any other arrangements. The fact a delay may entitle you to cancel your flight does not automatically entitle you to cancel any other arrangements even where those arrangements have been made in conjunction with your flight. We have no liability to make any payment to you in relation to the Denied Boarding Regulations or in respect of any flight cancellation or delay, downgrading of any flight ticket or denial of any boarding as the full amount of your entitlement to any compensation or other payment (as dealt with above) is covered by the airline's obligations under the Denied Boarding Regulations. If for any reason, we make any payment to you or a third party which the airline is responsible for in accordance with the Denied Boarding Regulations, you must, when requested, assign to us the rights you have or had to claim the payment in question from the airline. If the airline does not comply with these rules, you may complain to the CAA on 020 7453 6888 or by e-mail to passengercomplaints@caa.co.uk or see www.caa.co.uk – Referring Your Complaint to the CAA.

Transfers

45. These are only available on the day your journey commences and the day your journey terminates at designated times. Transfers outside these times will be at your expense and arrangement. If you have purchased pre and post journey hotel accommodation through us, you will be provided with airport transfers to/from your hotel to the relevant gateway airport. If your airline booking is not made by us, you must ensure your flight details are provided to us (this can be entered by Tour Personaliser at www.scenic.co.uk.) Please note: No refund will be given for unused transfers. Transfers cannot be routed to other pick-up points or destinations. Passengers who miss the pre-booked transfer will be responsible for making their own way to/from the ship/rail station or hotel at their own expense. Transfers must be booked and flights advised to us a minimum of 60 days prior to travel otherwise transfers cannot be guaranteed. Waiting times - for transfers on disembarkation from the vessel may lead to an extended wait at the airport.

Passports and visas

46. British (citizen) passport holders are recommended to have a valid passport with at least 6 months validity from return date. If your passport has less than 6 months validity from the return date, then a waiver form must be signed. It is your responsibility to ensure any visas required for countries to be visited on the journey have been obtained prior to the journey departure date. Failure to obtain correct documentation will mean you may be unable to participate

in particular shore excursions and may be denied boarding and/or entry into certain countries. Passport and visa entry requirements and costs are your sole responsibility. We cannot accept any liability if you are refused entry onto any transport or into any country due to failure on your part to carry correct documentation. If failure to have any necessary travel or other documents results in fines, surcharges or other financial penalty being imposed on us, you will be responsible for reimbursing us accordingly. We recommend that you check www.gov.uk/foreign-travel-advice for the latest entry requirements for the countries you are due to visit.

47. A full British passport presently takes approximately 6 weeks to obtain. If you are 16 or over and have not yet got a passport, you should apply for one at least six weeks before your departure from the UK. The UK Passport Service has to confirm an applicant's identity before issuing their first passport and will ask them to attend an interview in order to do this. If you are not a British citizen or hold a non-British passport, you must check passport and visa requirements with the Embassy or Consulate of the country(ies) you are travelling through and to which you are intending to travel. Please note, all requirements may change and all clients must check the up-to-date position in good time before departure with the Embassy or consulate of the country(ies) you are travelling through and to.

48. It is your responsibility to ensure you are aware of all recommended vaccinations and health precautions in good time before departure. Details are available from your GP surgery and from the National Travel Health Network and Centre <http://travelhealthpro.org.uk/>. Information on health abroad is also available on www.nhs.uk/Livewell/Travelhealth. At the time of publication of this brochure, we are not aware of any compulsory health requirements applicable to British citizens taking any of the holidays featured in this brochure. For holidays in the EU/EEA you should either be in possession of a valid EHIC (European Health Insurance Card) or apply for the UK Global Health Insurance Card (GHIC) prior to departure from <https://www.nhs.uk/using-the-nhs/healthcare-abroad/apply-for-a-free-uk-global-health-insurance-card-ghic/>. An EHIC or GHIC is not a substitute for travel insurance. Vaccination and other health requirements/recommendations are subject to change at any time for any destination. Please therefore check with a doctor or clinic not less than six weeks prior to departure to ensure that you have met the necessary requirements and have the applicable information.

49. It is the lead name's responsibility to ensure that all members of the party are in possession of all necessary travel and health documents before departure. All costs incurred in obtaining such documentation must be paid by you. We regret we cannot accept any liability if you are refused entry onto any transport or into any country due to failure on your part to carry all required documentation. If failure to have any necessary travel or other documents results in fines, surcharges or other financial penalty, costs or expenses being imposed on or incurred by us, you will be responsible for reimbursing us accordingly.

Financial security

50. We hold an Air Travel Organiser's Licence issued by the Civil Aviation Authority (ATOL number 9294). When you buy an ATOL protected flight, or flight inclusive holiday from us, you will receive an ATOL Certificate. This lists what is financially protected, where you can get information on what this means for you and who to contact if things go wrong. We, or the suppliers identified on your ATOL Certificate, will provide you with the services listed on the ATOL Certificate (or a suitable alternative). In some cases, where neither we nor the supplier are able to do so for reasons of insolvency, an alternative ATOL holder may provide you with the services you have bought or a suitable alternative (at no extra cost to you). You agree to accept that in those circumstances the alternative ATOL holder will perform those obligations and you agree to pay any money outstanding to be paid by you under your contract to that alternative ATOL holder. However, you also agree that in some cases it will not be possible to appoint an alternative ATOL holder, in which case you will be entitled to make a claim under the ATOL scheme (or your credit card issuer where applicable). If we, or the suppliers identified on your ATOL certificate, are unable to provide the services listed (or a suitable alternative, through an alternative ATOL holder or otherwise) for reasons of insolvency, the Trustees of the Air Travel Trust may make a payment to (or confer a benefit on) you under the ATOL scheme. You agree that in return for such a payment or benefit, you assign absolutely to those Trustees any claims which you have or may have arising out of or relating to the non-provision of the services, including any claim against us, the travel agent or your credit card issuer where applicable. You also agree that any such claims may be re-assigned to another body, if that other body has paid sums you have claimed under the ATOL scheme. Please note: Not all holiday or travel services offered and sold by us will be protected by the ATOL scheme *The air inclusive holidays and flights we arrange are ATOL protected providing they are made available in the UK. For further information, visit the ATOL website at www.atol.org.uk.

51. We are a member of ABTA with membership number Y6328. ABTA and ABTA members help holidaymakers to get the most from their travel and assist them when things do not go according to plan. We are obliged to maintain high standards of service to you by ABTA's Code of Conduct. For further information about ABTA, the Code of Conduct and the dispute resolution scheme available to you if you have a complaint, contact ABTA, 30 Park Street, London SE1 9EQ.

Tel: 020 3117 0500 or www.abta.com.

If your holiday does not include flights, ABTA will financially protect your holiday by ensuring you receive a refund or, if your arrangements include return travel to the UK (other than flights) you are returned to the UK in the event that your holiday cannot be provided as a result of our insolvency. Please go to www.abta.com for a copy of the guide to ABTA's scheme of Financial Protection.

Currency and credit cards

52. Currency and Credit Cards: All purchases on board are charged to your shipboard account. The on board currency on ocean cruise ships is the US Dollar. Shipboard accounts may be paid by US Dollar or credit card.

Deck plan & Cruise Cabins

53. The deck plan, cabin sizes, images, inclusions and cabin layout in the Journey Brochure are indicative only and may vary. Pictured representations of cabins or rooms in Journey Brochures are not drawn to scale. Suite dimensions within each category may vary in size depending on their location on each deck. Suite measurements are based on gross calculations and include internal technical spaces.

54. Your journey price is based on the cabin category indicated in the journey brochure. Upgrades are subject to availability and will be at an additional cost.

Cruise Itinerary

55. We reserve the right to substitute or cancel scheduled ports of call which, in our sole judgement and discretion, is justified for any reason and to do so without liability for any loss whatsoever to guests as a result of said changes (s).

Noise, vibration and odour

56. While we take reasonable steps to minimise noise, vibrations and odours on the cruise ships, you acknowledge and accept that some noise, vibration and intermittent odours may be experienced on vessels and that we will not be liable to you in relation to such noise, vibration or odours.

Docking position

57. During port stops, ships may dock side-by-side, obstructing views.

Cruise Director

58. An experienced English-speaking Cruise Director accompanies every cruise. They are there to ensure your comfort, answer your questions and make your holiday relaxed and memorable. Cruise Directors are employed by us.

All-inclusive beverages

59. (a) All standard beverages are included in the Cruise Price whilst you are on board Scenic Eclipse. This includes beer, wine, soft drinks and standard spirits. It also includes daily replenishment of the suite minibars. (b) Selected items such as high-end spirits, including malt whiskey, French champagne and selected wines are not included and will be an additional charge. (c) Responsible service of Alcohol is adhered to by all staff on board. We reserve the absolute right to refuse service.

Electricity and WiFi

60. Some of our vessel have WiFi internet access on-board. Even when available access to the internet may be limited or none existent during the course of your cruise due to the demands from other users and/or the ships proximity to telecommunication services and network access. We also cannot guarantee that you will have any WiFi coverage in your room. Charges will apply to third party suppliers.

Sightseeing, Excursions and Special Activities on your cruise

61. (a) Sightseeing: Sightseeing in many historic towns and cities can only be undertaken by walking as motorcoach access is not possible. Consequently, a reasonable level of fitness is required as the sightseeing tour may involve steps and extensive walking over uneven surfaces. (b) Mountain Excursions: Some shore excursions include mountain excursions involving high altitudes. Please consult with your doctor to ensure that You have an adequate level of fitness and are in good health before participating in these excursions. (c) (b)Discovery Experiences: a reasonable level of mobility is required to partake in most discovery experiences. Discovery experiences including but not limited to Zodiac, kayak, helicopter, e-bikes and submarine are subject to regulatory approval and prevailing weather and ice conditions. Discovery experiences can be booked whilst on Cruise with Your Cruise Director or Discovery Leader (unless otherwise stated) and are subject to availability, seasonal and operational factors. Some activities require a minimum and maximum number of participants to operate.

(c)Scenic Freechoice: All Scenic Freechoice activities and Scenic Freechoice Dining can be booked whilst on journey with your Cruise Director or Tour Director (unless otherwise stated) and are subject to availability, seasonal and operational factors. Some activities require a minimum or maximum number of participants to operate.

(d) Scenic Enrich: It may not always be possible to offer every Scenic Enrich activity in the journey brochure on your journey. Wherever possible, suitable alternatives will be provided without liability to You.

Medical Services

62. (a) A medical centre is available on board Scenic Eclipse and will be staffed according to the destination. (b) Due to the large number of passengers on board, we cannot provide a personal escort for medical visits.(c) We are not, and our Services Providers and the Operators are not, liable regarding the provision of any medical care you may require or choose to accept during your journey. (d) You acknowledge that Antarctica, the Americas Transatlantic crossings, Arctic & Fjords regions are remote areas with limited

medical facilities available.

Pictures, images and data protection Drones, Maps, Pictures and Images

63. (a) General prohibition: Unless provided by us or an operator as part of an organised activity during your journey, the use of drones is strictly prohibited at all times. (b) You should also be aware that, in addition to the prohibition in paragraph.

(a) The use of drones is regulated or prohibited by law in many locations and unlawful use may result in arrest or prosecution by the relevant authorities. (b) If we or an operator allow you to operate a drone as part of an organised activity during your journey, you must strictly comply with all instructions of the activity leader.

64. Unless otherwise stated we make no representations about the facilities, quality or dimensions of any accommodation or cruise vessel. All images are for illustrative purposes only and may differ from the actual product or experience available to you, some pictures may also have been digitally enhanced for reproduction purposes.

(a)Maps: Maps or journey depictions In the journey brochures or any other brochure we Issue are Intended as an Indication only and should not be relied upon as the actual route to be taken during the journey.

65. For the purposes of the General Data Protection Regulation (GDPR) we are a data controller. Our privacy policy is available to view on our website www.scenic.co.uk and sets out how we collect and use the personal information you provide us with. We will only process personal data as set out in our privacy policy (as amended or added to) or otherwise notified to or agreed by you or as we are otherwise permitted to do in accordance with the GDPR.

Video and Photography

66. (a) We may capture photographs and video footage throughout the journey for the purposes of compiling a video which features some of the highlights and activities of the journey (journey video). Although we will use reasonable endeavours to ensure that the photographs and video footage captured are general in nature and do not focus on any specific individual, you acknowledge that we may capture photographs and video footage of you throughout the journey.

(b) The journey video will be prepared and made available online to you and all other passengers following the journey. The journey video will be provided to you for personal use only and you must not use it for any commercial or unlawful purpose.

(c) We may decline to produce, or make available to you, a journey video in our absolute discretion.

(d) You acknowledge and agree that, despite clause 66(f), Scenic has no ability to restrict or control the further publication or distribution of the journey video by other passengers.

(e) If you do not wish to appear in the journey video, you must inform Us at the commencement of the journey by completing and returning to reception on the Cruise Vessel an 'opt-out' form, in which case we will use reasonable endeavours to ensure you do not appear, or are not able to be identified, in the journey video.

(f) You acknowledge and agree that we may use the journey video (and any still images from it) for marketing, training and promotional purposes and you waive any right to claim any payment or other compensation for such use.

Hotel Accommodation

67.(a) Substitution: We may substitute hotel accommodation of a similar standard in the place of the advertised hotel due to hotel availability issues. Any changes will be notified once confirmed with the hotel.

(b) Responsibility: Although we have taken reasonable steps to secure the most suitable hotel accommodation in the area of the journey, we are not liable to you for the quality, size or fitness of hotel rooms.

Destination Specific Terms

68. Not later than 15 days before the journey departure date, expectant mothers are required to supply a medical certificate establishing their fitness for travel at the time they are due to travel. The certificate must be signed by a medical practitioner, include the estimated delivery date and be dated not earlier than 30 days before the journey departure date. In any event, we are unable to accommodate, and will not allow to participate in the journey, any woman who has entered her twenty-fourth (24th) week of pregnancy prior to the journey departure date, or who will do so at any time during the journey, and, to the maximum extent permitted by law, will not be responsible or liable for any complication relative to any pregnancy during the entire duration of the cruise or thereafter. Additionally, airlines may have restrictions that may differ from ours. Please contact your travel professional or airline for details.

69. Unscheduled Embarkation / Disembarkation: International cabotage laws may prohibit guests from embarking or disembarking their voyage in any port except the main scheduled embarkation and disembarkation ports. Only those guests with a medical emergency may be allowed to embark or disembark the Cruise Vessel at an unscheduled embark / disembark port. If an unscheduled embarkation or disembarkation is permitted as a result of an emergency, those guests may incur additional charges intended to cover any fine or penalty levied against Scenic and any other additional costs. Such additional costs will be added to the guests' on board account prior to disembarking.

70. We strongly recommend that you take out comprehensive travel insurance with a reputable insurance company to cover you against risks associated with your cruise/journey including cover for loss of luggage, medical expenses, costs and expenses incurred due to

cancellations, delays or other disruptions or medical evacuation in remote areas.

71. Service Animals: Due to the sensitive environments and regulatory regulations of the region travelled to, we are unable to accept service animals on the Cruise.

72. Antarctica, the Americas, Transatlantic crossings, Arctic & Fjords and other remote Regions:

(a) Highlights and wildlife encounters as outlined in the Itinerary are possible experiences only and cannot be guaranteed. Your Captain, Discovery Team Leader or Cruise Director will determine opportunities for exploration taking into account the prevailing weather, wildlife activity and ice conditions.

(b) Laundry and internet facilities may be limited whilst cruising in these regions

(c) Complimentary Polar Parka and special Polar boot use is included for all Cruises to Antarctica, South Georgia and the Arctic & Fjords.

(d) You must complete a mandatory full medical questionnaire (to be provided 90 days prior to departure) which must be signed by the your medical practitioner between 90 and 60 days prior to the journey departure date and must be returned to Scenic not later than 60 days prior to the journey departure date. Any medical certificate issued earlier than 90 days before the journey departure date will not be accepted. Any guest who has not completed and returned their medical certificate will not be cleared for embarkation and will not benefit from any refund.

(e) As a condition of travelling to Antarctica or Arctic & Fjords on a journey, you must provide to us, at least 10 days before the journey departure date:

(i) evidence that you hold comprehensive insurance, including medical evacuation coverage; or

(ii) evidence that you have access to available funds of not less than \$150,000 USD; or

(iii) a bond or other security, satisfactory to Us, in Our absolute discretion, to cover the cost of medical evacuation in the event of a medical emergency.

73. Discovery Experiences: a reasonable level of mobility is required to participate in most discovery experiences. Specific discovery experiences will be advised on full release. Discovery experiences including Zodiac, kayak, helicopter, e-bikes and submarine are subject to regulatory approval, availability, weight restrictions, medical approval and prevailing weather, marine and ice conditions and may be cancelled at short notice. We cannot guarantee their availability, even if you have made an on-board booking. Discovery experiences can be booked whilst on Cruise with Your Cruise Director or Discovery Team Leader (unless otherwise stated) and are subject to availability, seasonal and operational factors. Some activities require a minimum and maximum number of participants to operate. We reserve the right to terminate, your participation in a discovery experience if the Cruise Director, Tour Director or Discovery Team Leader reasonably considers that your continued participation poses a risk to the health or safety of You or any other person or You refuse to comply with all reasonable directions of the Cruise Director, Tour Director or Discovery Team Leader or any guide or operator conducting the experience.

74. Future Travel Voucher

If we Issue a Future Travel Voucher to you:

(i) You may apply it towards any future booking for a Journey with a Journey Departure Date within 24 months after the date on which we cancel your booking; subject to availability and any Future Travel Voucher capacity limits applicable to your selected Journey or cruise;

(ii) If your original booking was for an ocean or river cruise, the Future Travel Voucher can only be applied to available ocean and river cruises within the Scenic Group (Scenic Luxury Cruises & Journeys and Emerald Cruises).

(iii) If your original booking was for a land Journey, the Future Travel Voucher can be applied to available land Journeys or ocean and river cruises within the Scenic Group (Scenic Luxury Cruises & Tours and Emerald Cruises).

(iv) You may, with our prior written consent, which we will not unreasonably refuse, transfer it to another person to apply towards any future Booking for a Journey with a Journey Departure Date within 24 months after the date on which we cancel your booking;

(v) its use for any future booking is subject to availability;

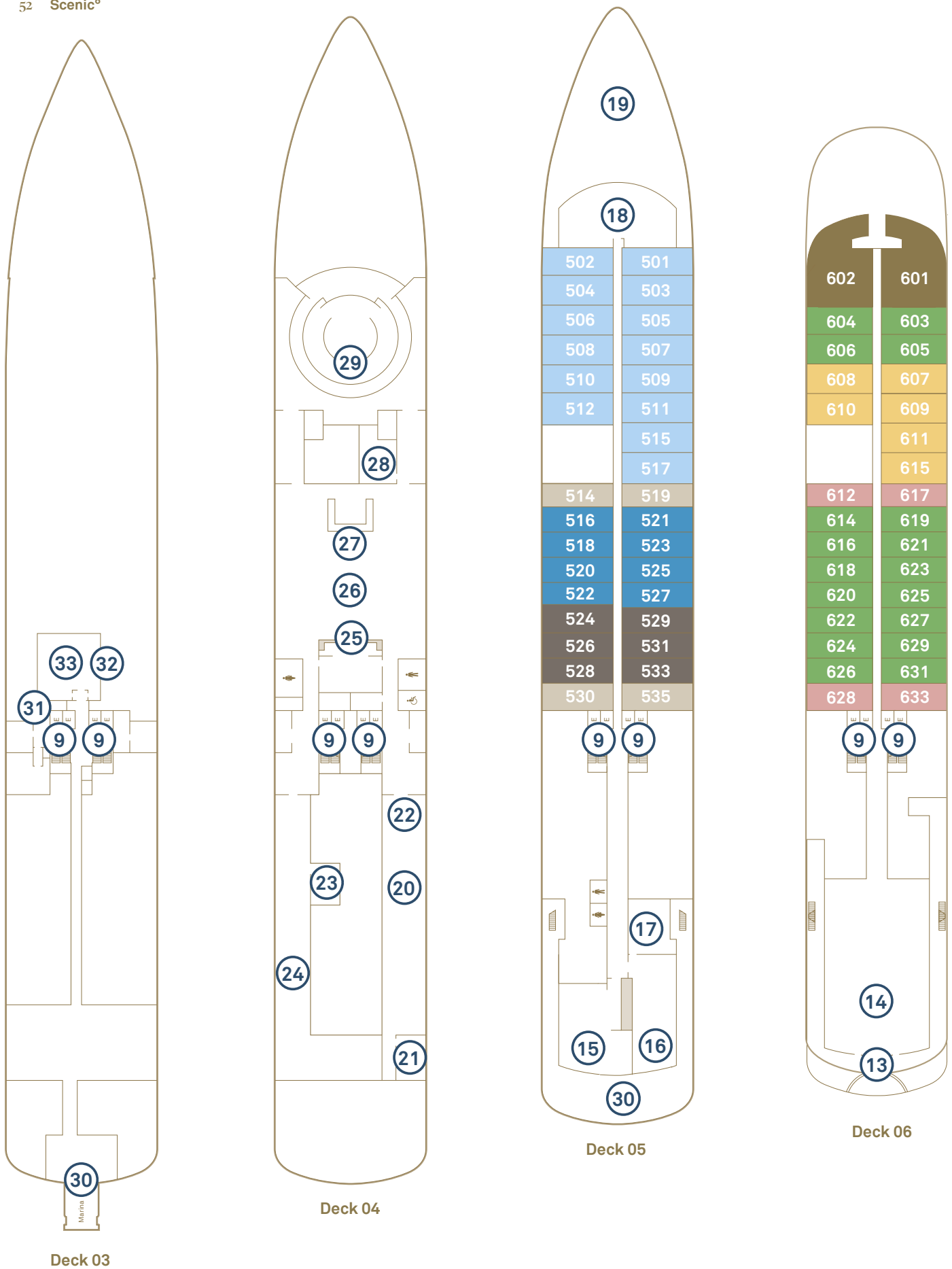
(vi) it cannot be applied against stand-alone products or upgrades from third parties or from service provides in conjunction with the standard journey itinerary.

(vii) If you do not use the Future Travel Voucher prior to the expiry date you will be entitled to a refund.

(viii) You (or the person to whom It is transferred) must pay any shortfall between the value of the Future Travel Voucher and the Journey price for the new booking.

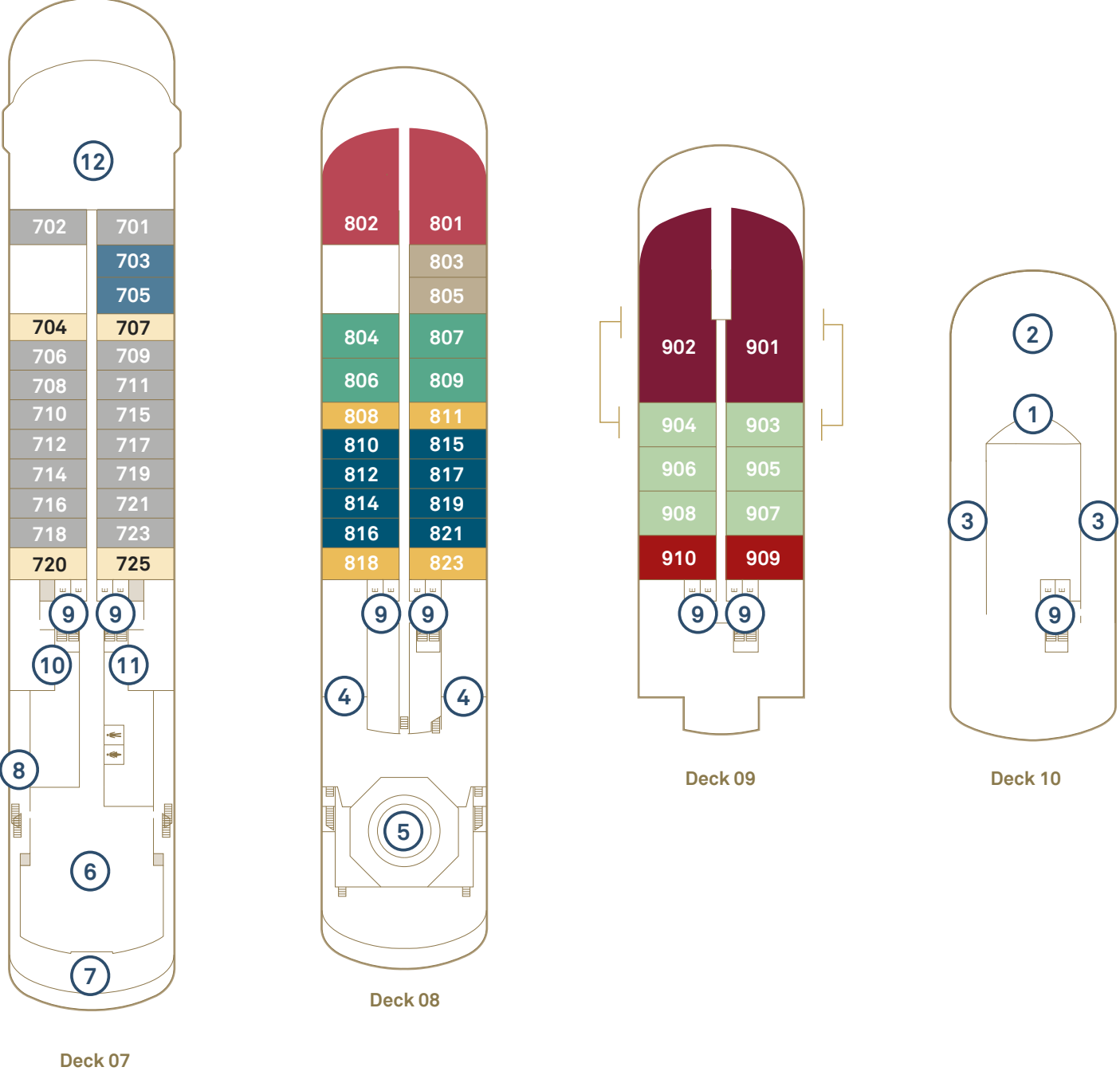
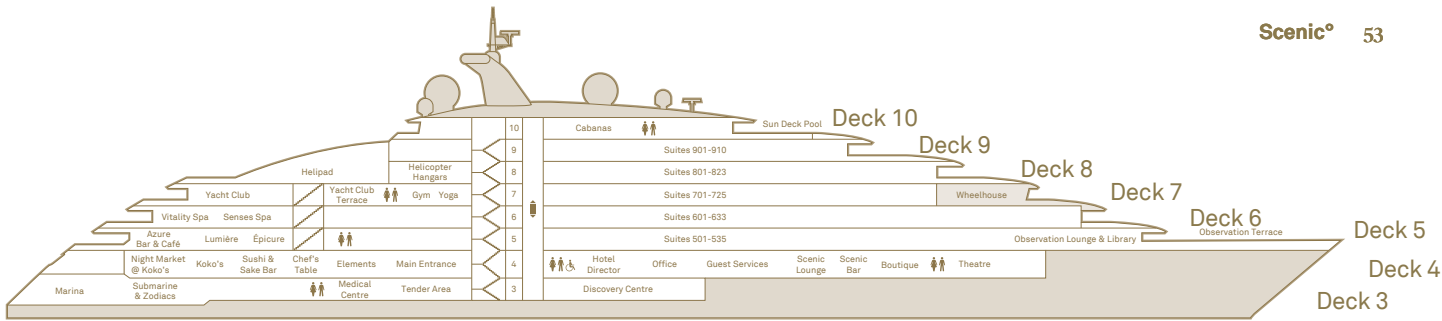
FULL TERMS AND CONDITIONS can be found online at www.scenic.co.uk/terms-and-conditions (subject to change).

Updated March 2022.



Deck Plan

- | | | | | |
|-----------------------------|-----------------------|--------------------------------|--------------------------|---|
| ① Panorama Bar | ⑧ Hanging Chairs | ⑮ Lumière | ⑳ Sushi @ Koko's | ㉑ Theatre |
| ② Sun Deck Pool | ⑨ Elevator | ⑯ Azure Bar & Café | ㉒ Chef's Table@ Elements | ⑳ Marina entrances |
| ③ Cabanas | ⑩ Yoga & Pilates room | ⑰ Scenic Épicure | ㉓ Elements | ㉑ Medical Centre |
| ④ Helicopter hangars | ⑪ Gym & fitness area | ⑱ Observation Lounge & Library | ㉔ Guest Services | ㉒ Self-service guest laundry [†] |
| ⑤ Helipad | ⑫ Wheelhouse | ⑲ Observation Terrace | ㉕ Scenic Lounge | ㉓ Discovery Centre |
| ⑥ Yacht Club | ⑬ Spa Vitality Pool | ㉒ Koko's | ㉖ Scenic Bar | |
| ⑦ Yacht Club outdoor dining | ⑭ Senses Spa | ㉓ Night Market @ Koko's | ㉗ Boutique | |



Scenic Eclipse

Built 2018 | Passengers 200/228 | Suites 114 | Crew 192/176 | Length 168 metres | Gross Tonnage 17,085 | Speed 17 knots

Suite Categories

Deck 5		Deck 6		Deck 7		Deck 8		Deck 9	
DD	Grand Deluxe Verandah 38-40m²	GP	Grand Panorama 105m²	BD	Grand Deluxe Verandah 38-40m²	P	Panorama 110m²	OT	Two-bedroom Penthouse 240-245m²
DB	Deluxe Verandah 32-34m²	CD	Grand Deluxe Verandah 38-40m²	BA	Deluxe Verandah 32-34m²	S	Spa Suite 46-50m²	OP	Owner's Penthouse 190-195m²
DA	Deluxe Verandah 32-34m²	CA	Deluxe Verandah 32-34m²	B	Verandah 32m²	AD	Grand Deluxe Verandah 38-40m²	SB	Spa Suite 46-50m²
D	Verandah 32m²	C	Verandah 32m²			AA	Deluxe Verandah 32-34m²	SA	Spa Suite 46-50m²
						A	Verandah 32m²		

*Suites 901 & 903 and 902 & 904 connect as Two bedroom Penthouse Suite. The deck plan and suite layout images are an indication only and may vary between ships. Suite measurements are approximate, and those in same category may vary in size.



More Scenic Eclipse Brochures

Worldwide Discovery Voyages

Antarctica and South America

The Arctic and Fjords

Australia, Indonesia and the Pacific

sceniceclipse.com

0808 189 2824

Contact your local travel agent

Scenic Offices

UK Office

1st Floor
4 Piccadilly Place
Manchester
M1 3BN
scenic.co.uk

Australia Offices

Level 4
25 Watt Street
Newcastle
NSW 2300
scenic.com.au

Level 15
56 Pitt Street
Sydney
NSW 2000
scenic.com.au

Canada Office

Suite 1025,
401 West Georgia Street
Vancouver,
BC V6B 5A1
scenic.ca

USA Office

4000 Hollywood Blvd.
Suite 625-S
Hollywood,
FL 33021
scenicusa.com

Scenic Tours Pty Ltd trading as Scenic. Registered: 05770868

